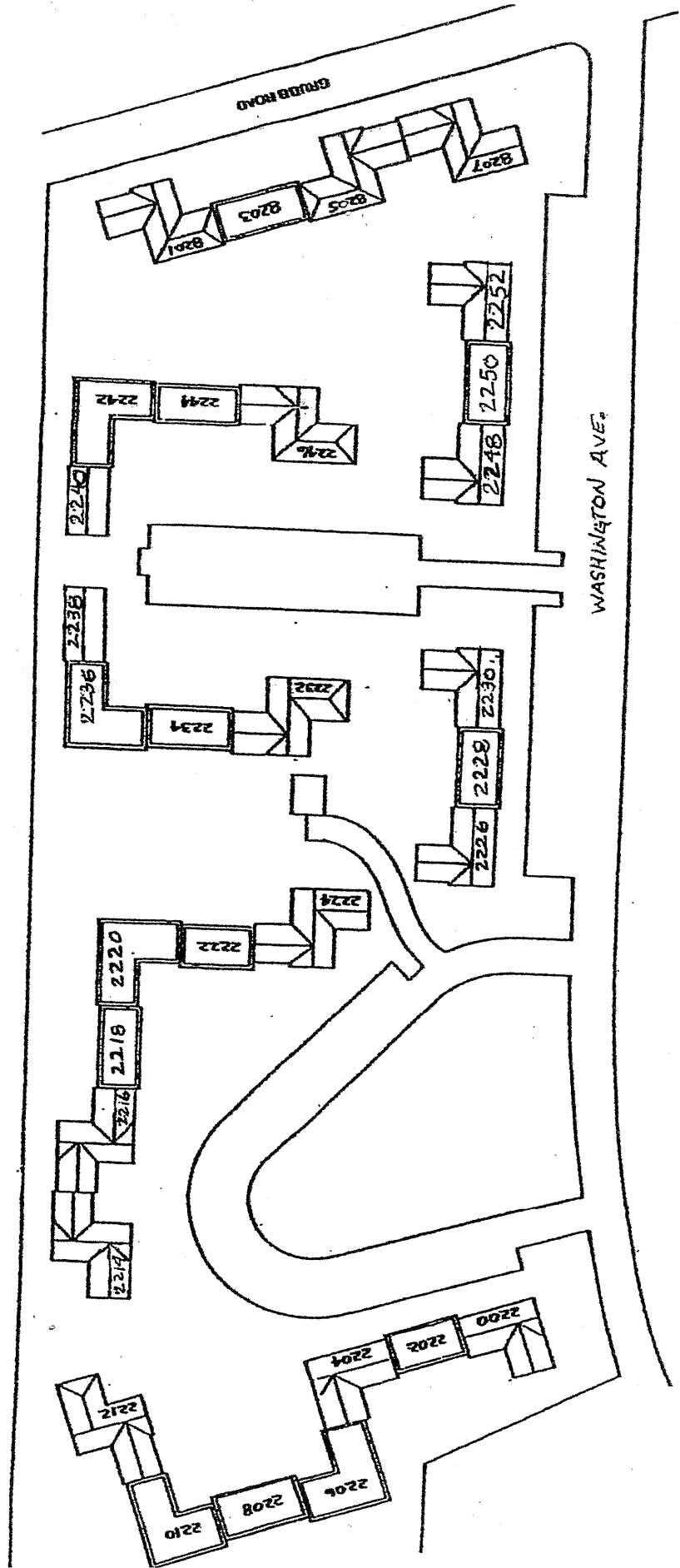
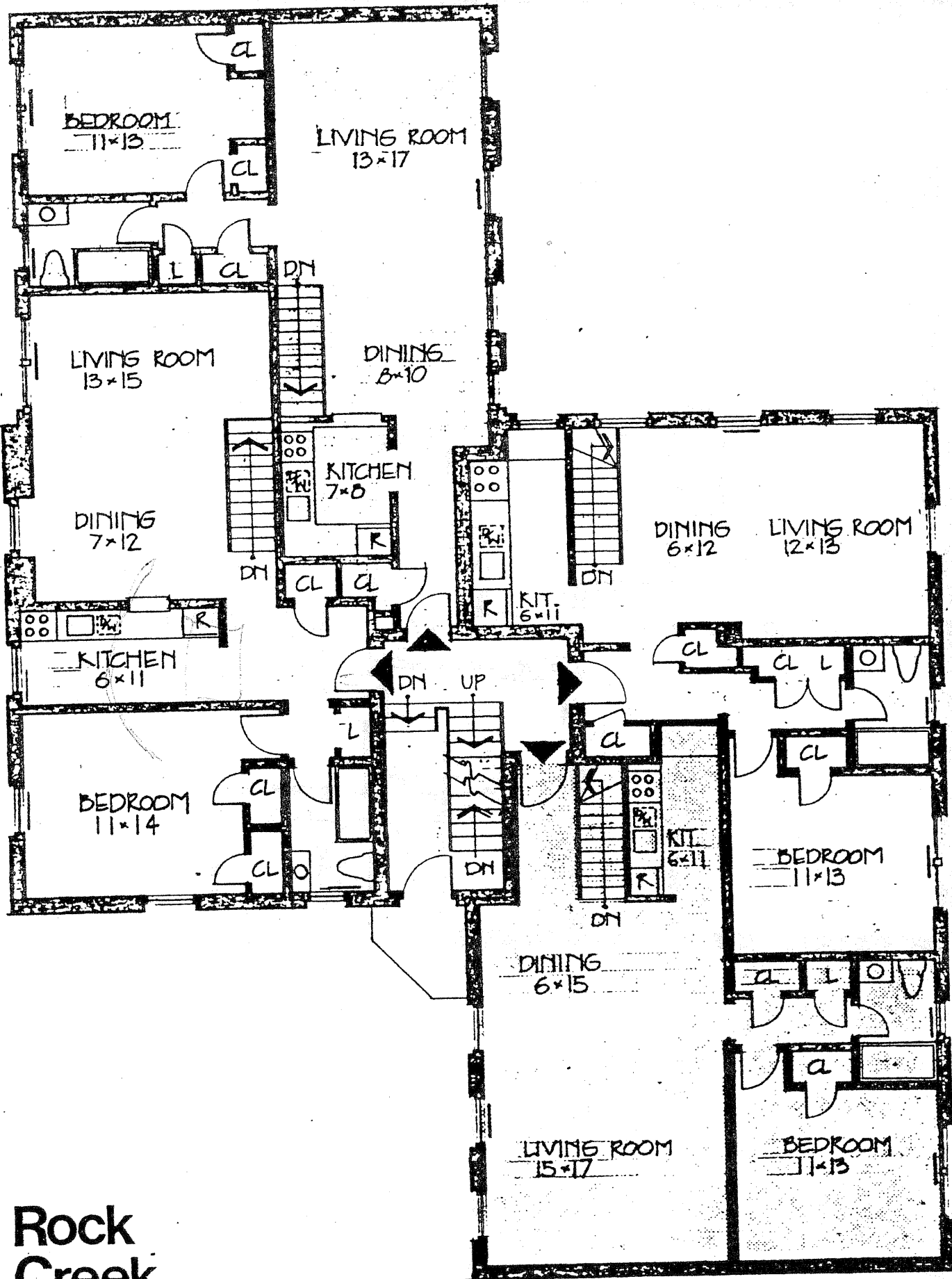


ROCK CREEK GARDENS CONDOMINIUM

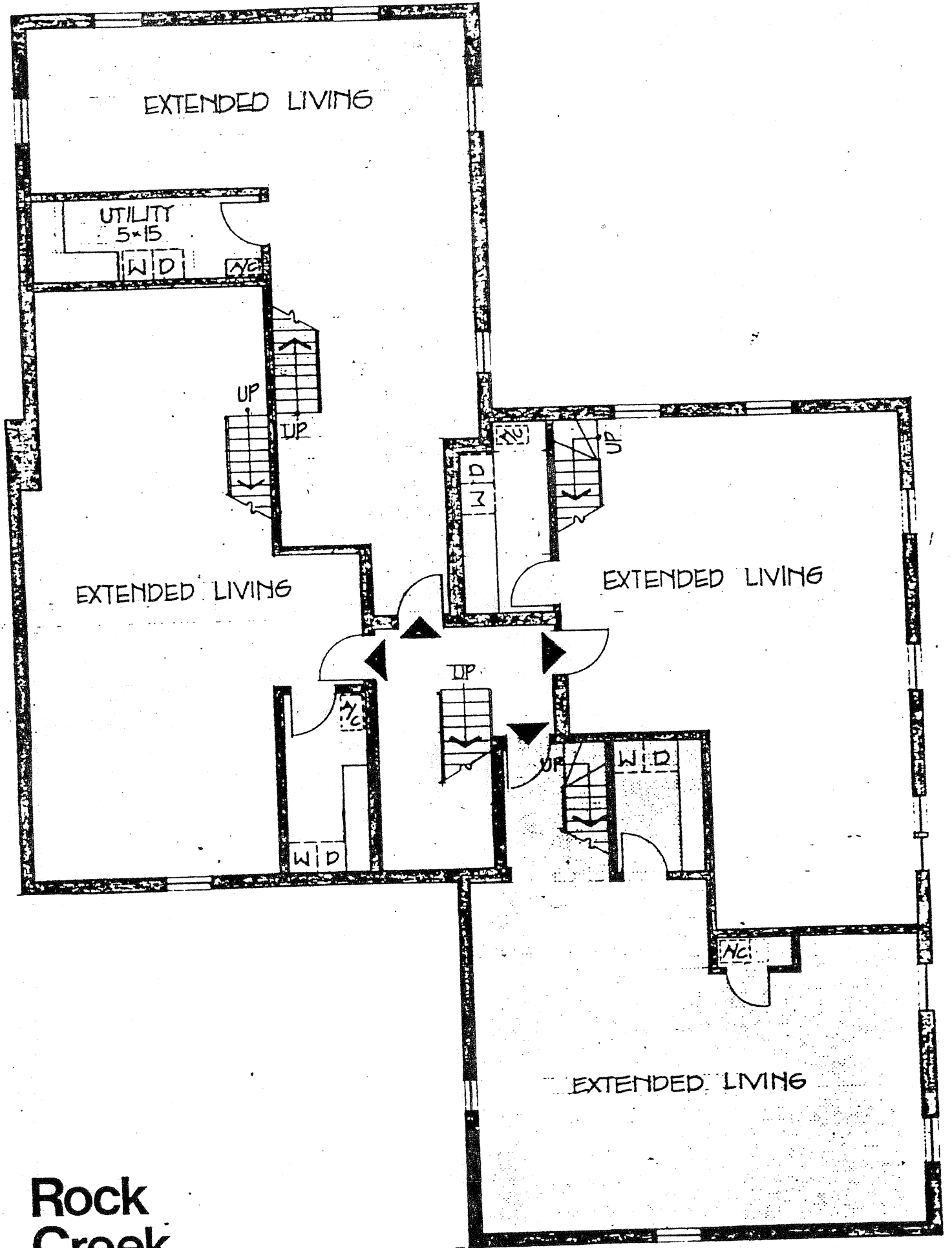




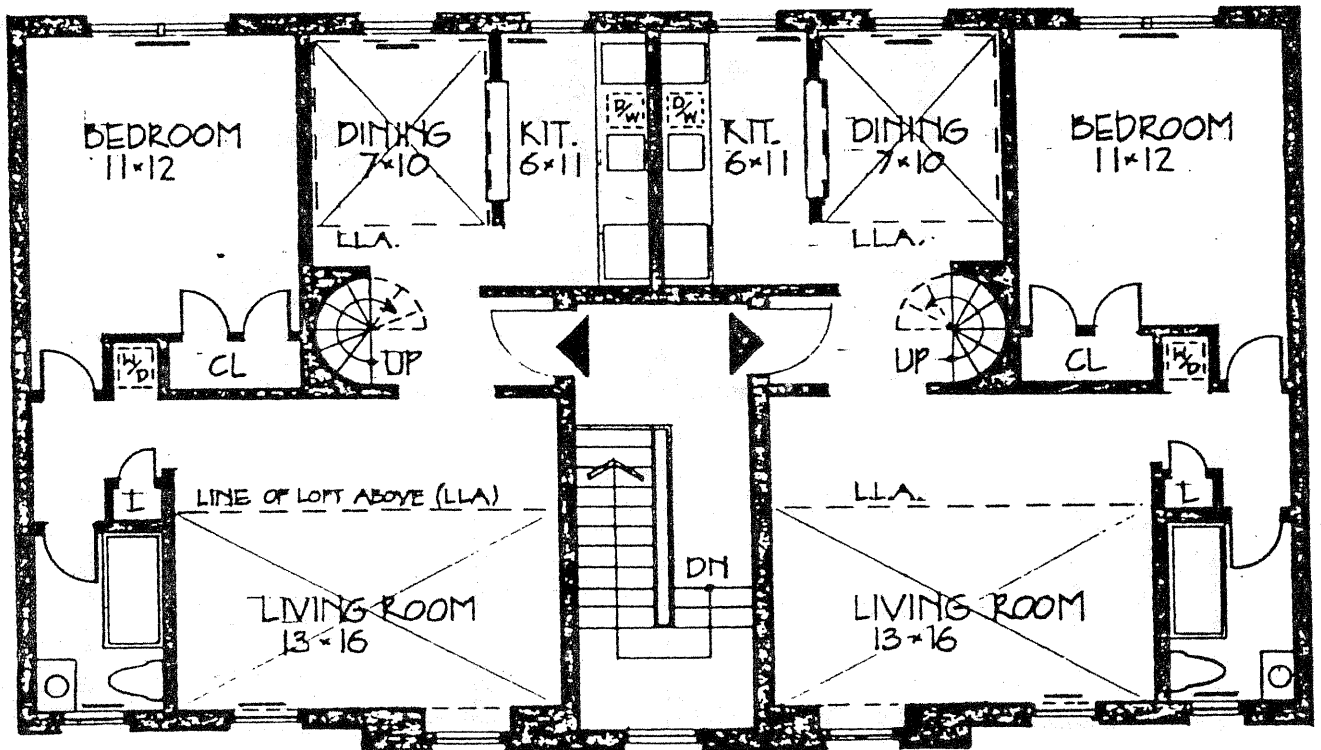
Rock Creek Gardens

a condominium for
La Vay Rock Creek, Inc.

a unit



**Rock
Creek
Gardens**

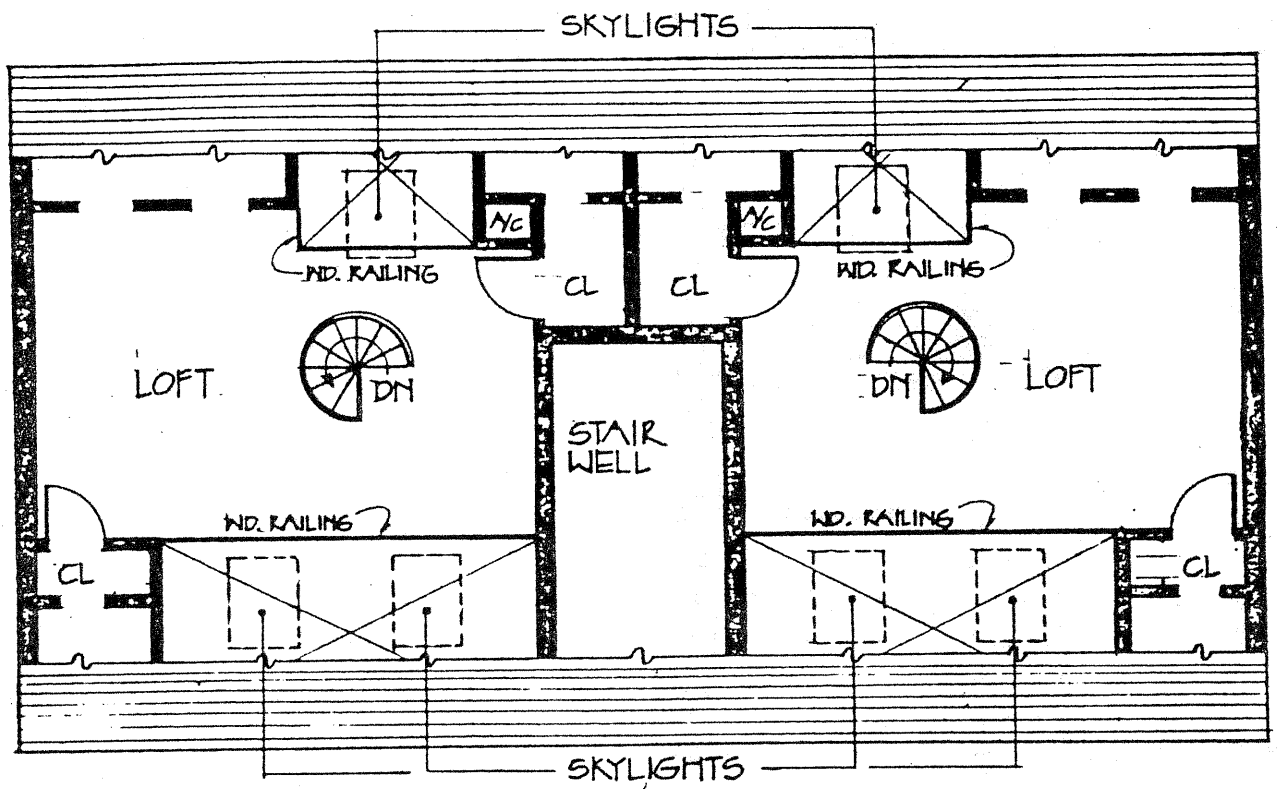


second floor w/ loft
b unit

Rock Creek Gardens

a condominium for
 La Vay Rock Creek, Inc.

Architects
 Smith Segreti Tepper
 1211 Connecticut Avenue, NW
 Washington, D.C.



loft

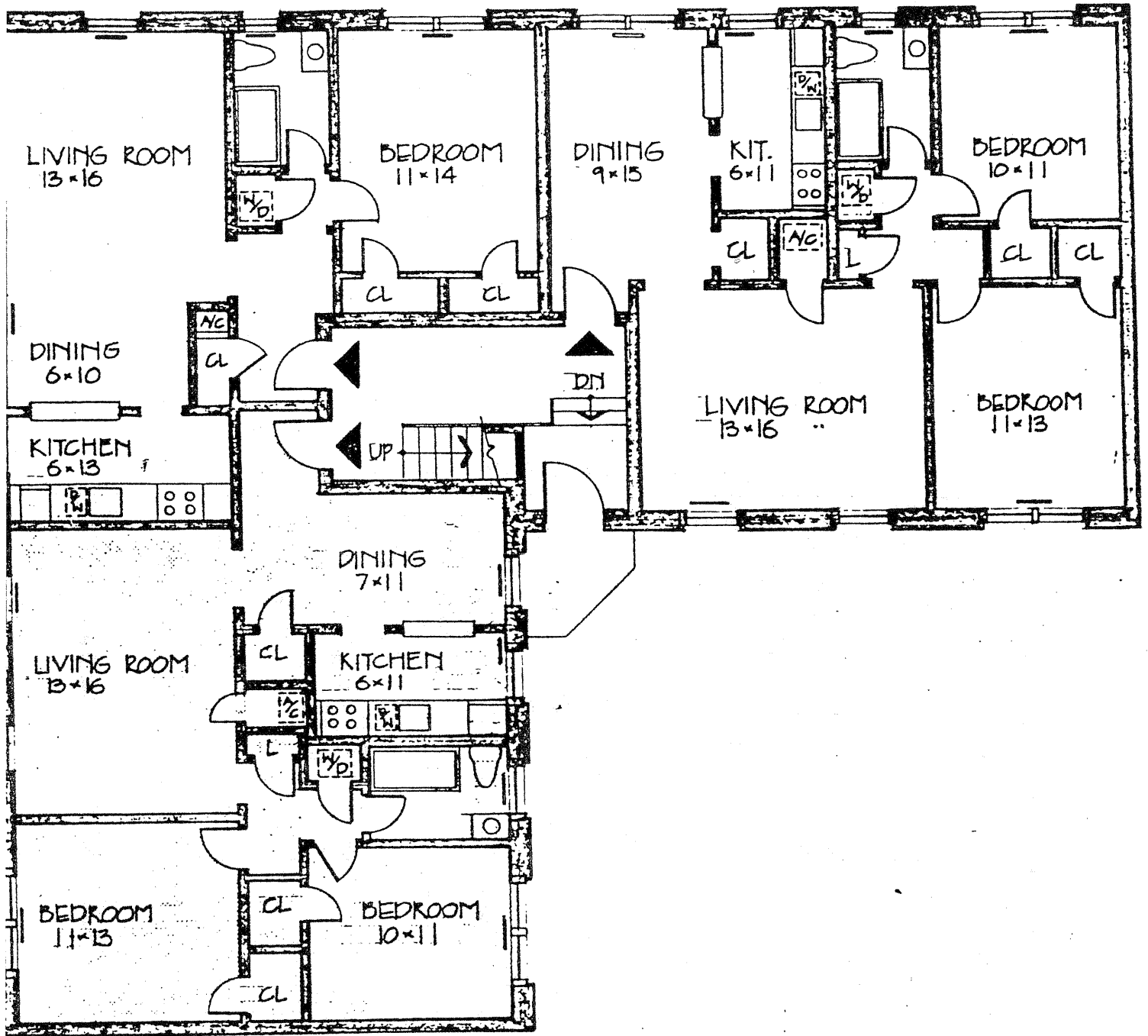
b unit

Rock Creek Gardens

a condominium for

La Vay Rock Creek, Inc.

Architects
Smith Segreti Tenner

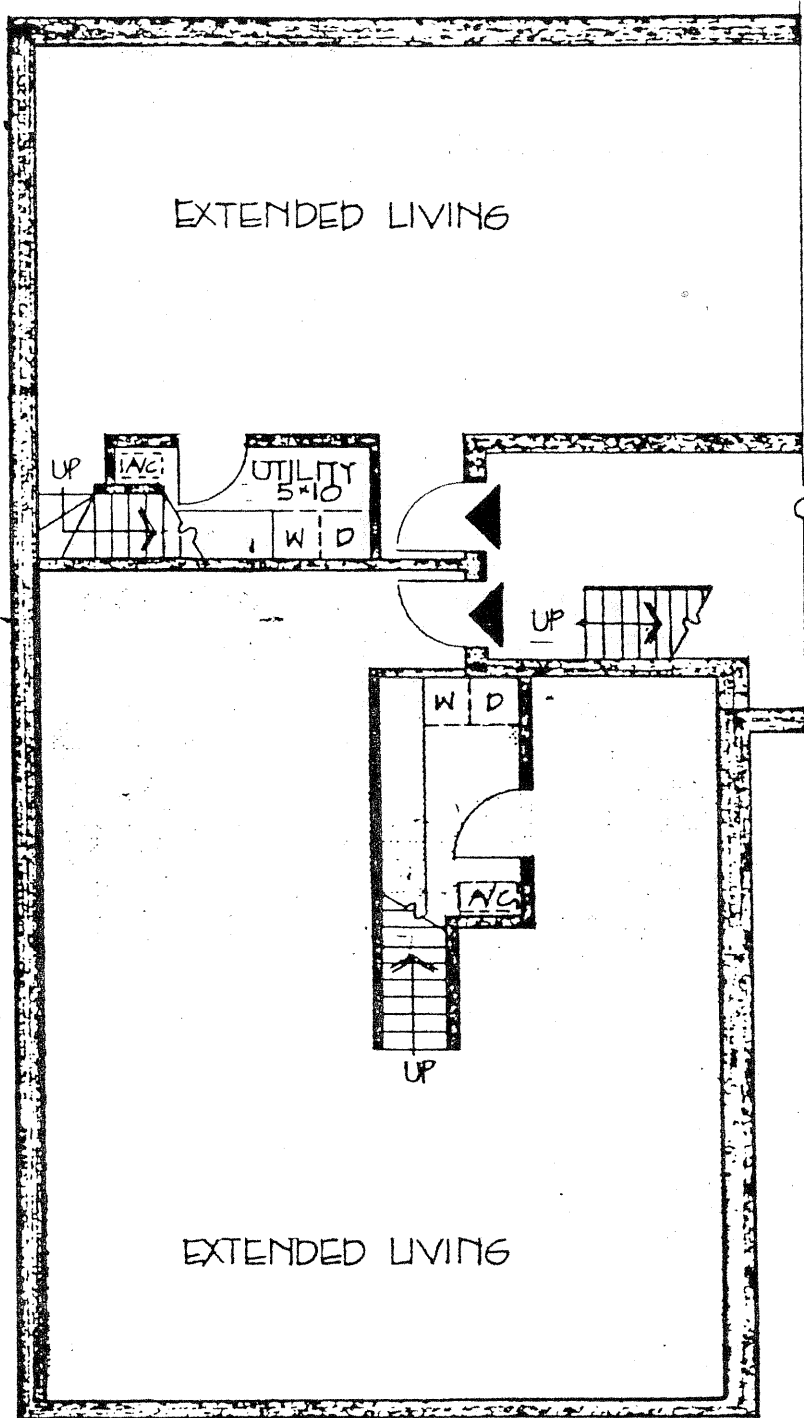


c unit
typical

**Rock
Creek
Gardens**

a condominium for
La Vay Rock Creek, Inc.

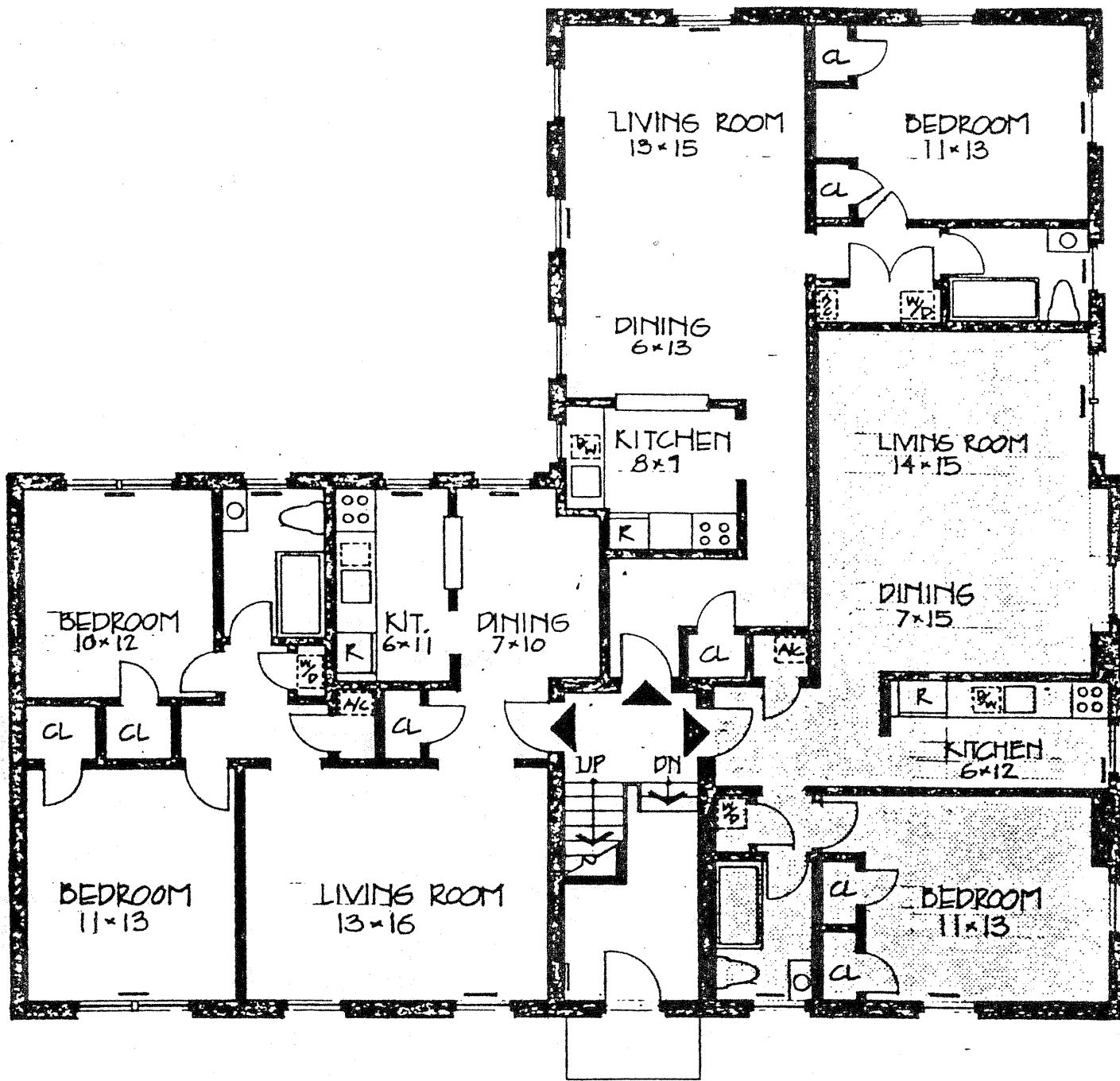
Architects
Smith Secreti Tepper



c unit

basement

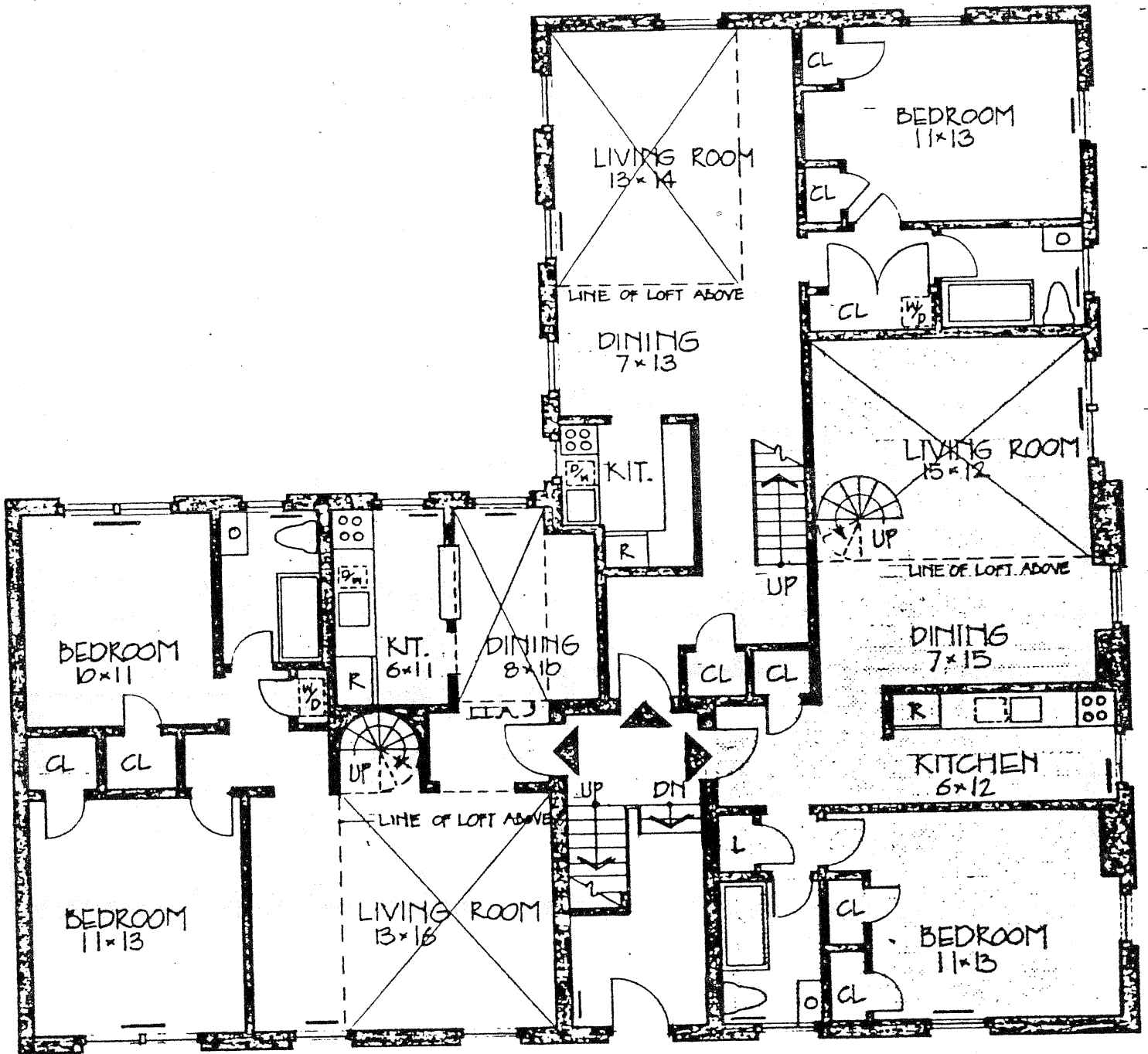
**Rock
Creek
Gardens**
a condominium for



d unit
typical

Rock Creek Gardens

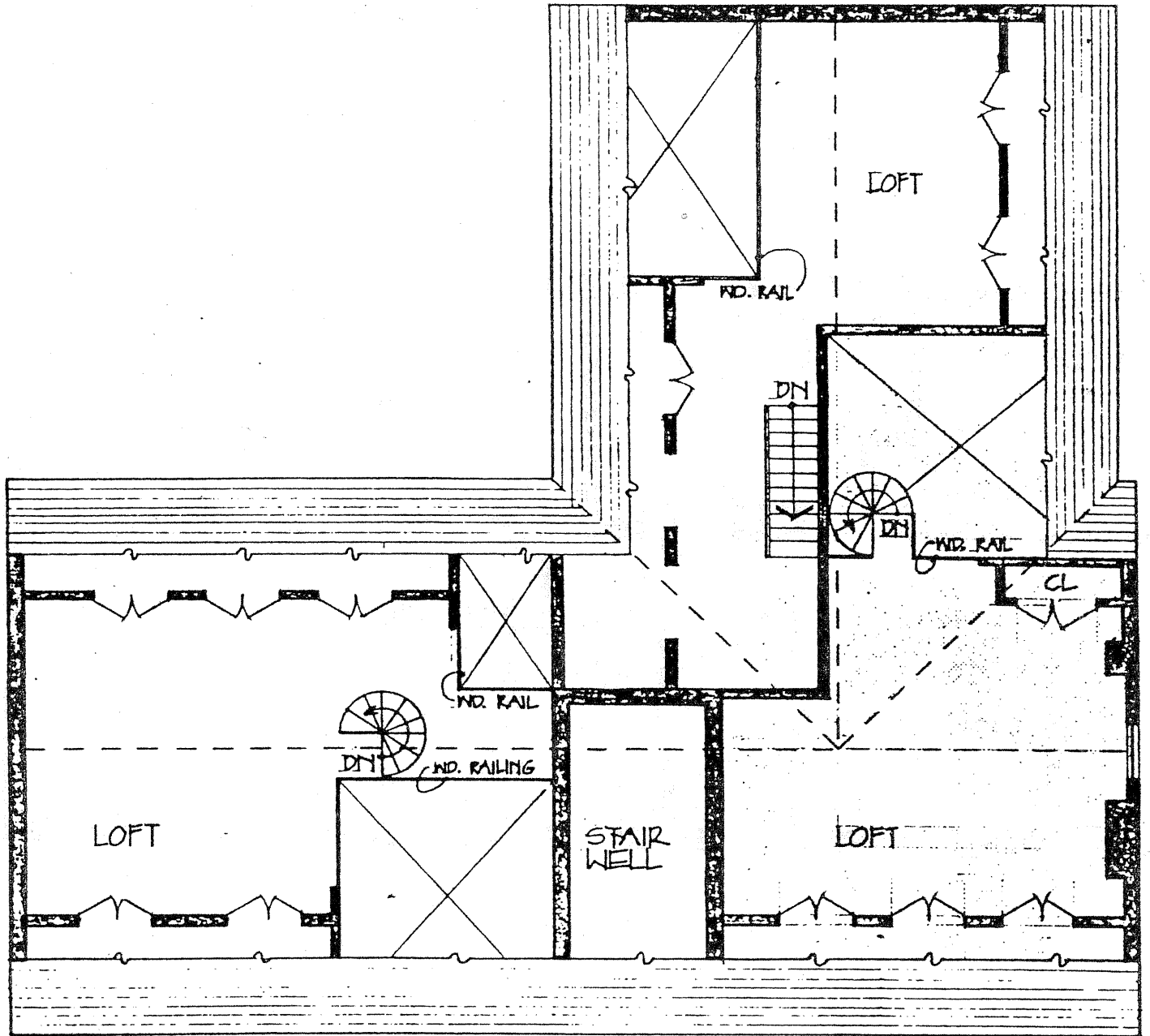
a condominium for
La Vay Rock Creek, Inc.



d unit
second floor w/ loft

**Rock
Creek
Gardens**

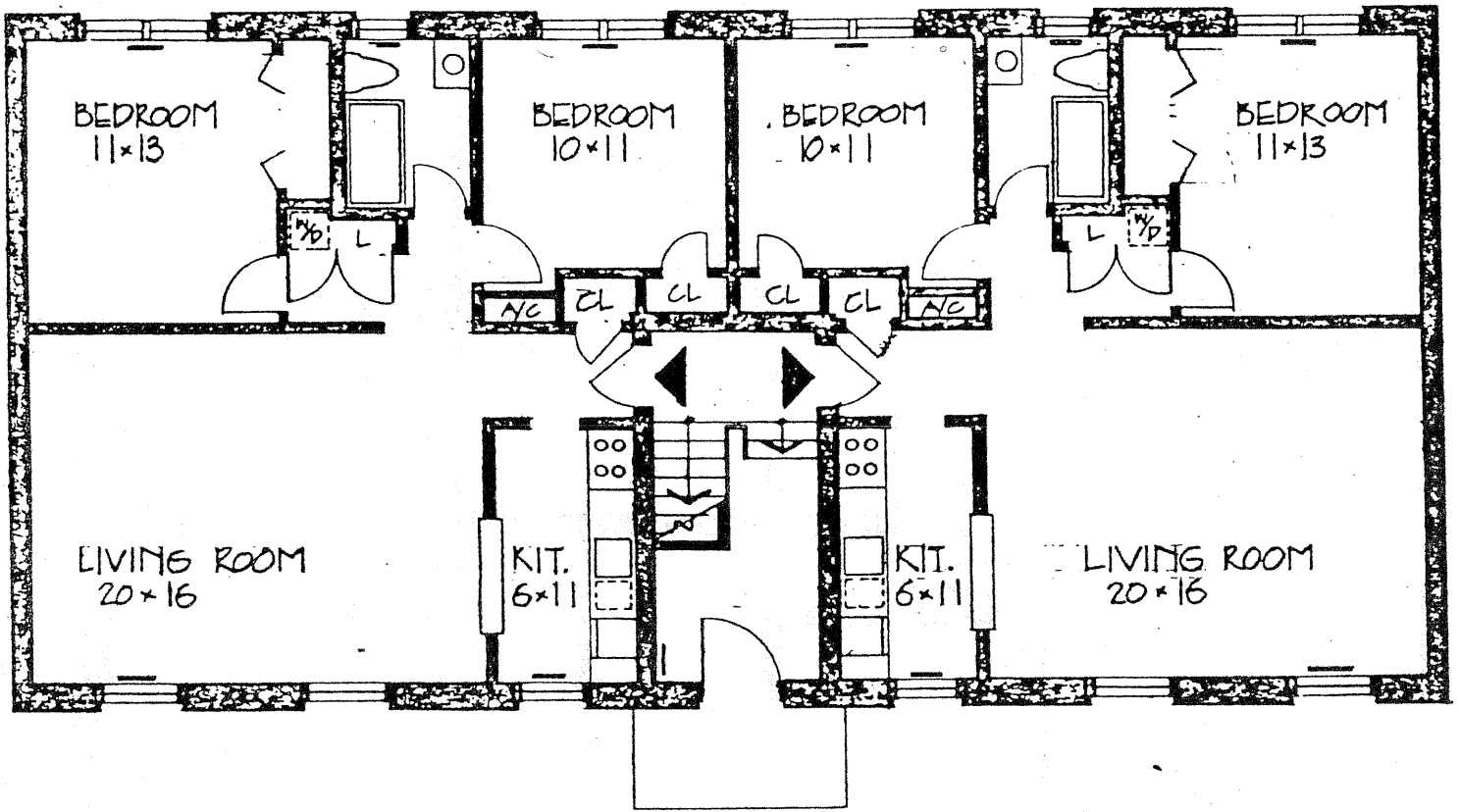
a condominium for



d unit
loft

Rock Creek Gardens

a condominium for
La Vay Rock Creek, Inc.



e unit
typical

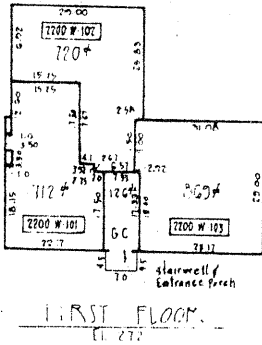
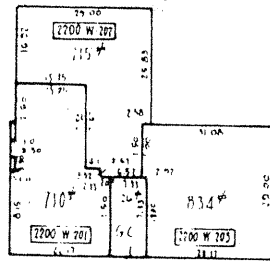
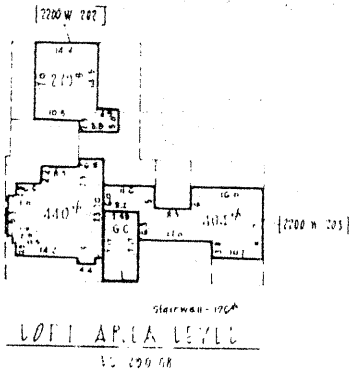
Rock Creek Gardens

a condominium for

La Vay Rock Creek, Inc.

Architects

Smith Segreti Tepper
1211 Connecticut Avenue, NW
Washington, D.C.



SURVEYOR'S CERTIFICATE

I hereby certify that the plan of condominium shown hereon is correct that it is a subdivision of the floors of Building No. 7 Group 2200-W, Rock Creek Garden Condominium as shown on sheet 2 of 15 filed as part of this plan of condominium.

July 15, 1970
Date

James M. Fowler Jr.
James M. Fowler Jr.
Professional Land Surveyor
Maryland Reg. No. 4214

NOTES

1. This unit group is a 2-story structure with a *split* area level and includes 6 condominium units.
2. Each condominium unit as shown hereon is designated by a combination of a letter and number. A typical example is shown thus: **(2200 W 101)**.
3. General common areas include stairwells, bearing walls, porch entrances and all land underlying the condominium units shown and designated hereon as G.C.
4. Limited common areas include balconies, terraces, decks, loggias and porches and trash rooms and designated hereon as L.C.
5. The dimensions of each condominium unit, the limited common areas and the common areas are measured from inside face of bearing walls. Dimensions having been taken from the architectural plans for said building. The areas of each unit are computed accordingly in square footage and designated hereon as G.
6. The elevations shown hereon are based on actual field surveys in W.S.S.C. Datum.
7. Solid lines shown hereon indicate bearing walls or structural elements. All interior bearing walls are not shown.

BUILDING NO 7 GROUP 2200 W

SHEET 3 OF 15
CONDOMINIUM PLAN
BUILDING NO 7 GROUP 2200-W
PHASE - I
ROCK CREEK GARDENS
CONDOMINIUM
ELECTION DISTRICT NO 13
MONTGOMERY COUNTY, MARYLAND
SCALE 1"=20' JULY 1970

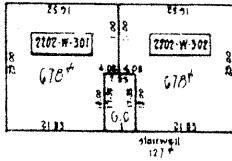
PREPARED BY
OFFICE OF
JAMES M. FOWLER
27 W. JEFFERSON ST., ROCK, MD.
P.O. 3-2377

SURVEYOR'S CERTIFICATE

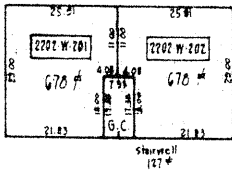
I hereby certify that the plan of condominium shown hereon is correct that it is a subdivision of the floors of Building No. 7 Group 2202 W, Rock Creek Garden Condominium as shown on sheet 2 of 15 filed as part of this plan of condominium.

FILED Dec. 1980
Date

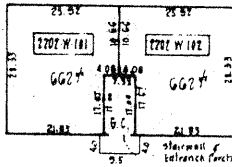
James M. Fowler, Jr.
Professional Land Surveyor
Maryland Reg. No. 4214



THIRD FLOOR
EL 288.6



SECOND FLOOR
EL 279.55



FIRST FLOOR
EL 270.5

BUILDING NO 7 GROUP 2202-W

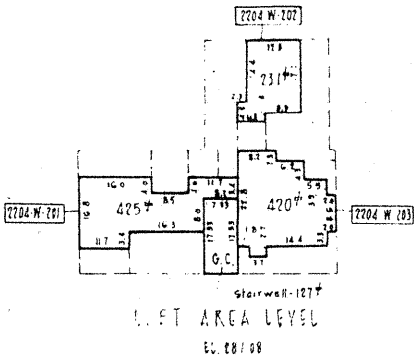
NOTES

1. This unit group is a 3 story structure and includes 2 condominium units per floor creating a total of six (6) condominium units.
2. Each condominium unit as shown hereon is designated by a combination of letters and numbers. A typical example is shown thus: 2202-W-101.
3. General common areas include stairwells, bearing walls, porch entrances, and off land underlying the condominium units shown and designated hereon as G.C.
4. Limited common areas include balconies, terraces, decks, lawns, and storage and trash rooms and designated hereon as L.C.
5. The dimensions of each condominium unit, the limited common areas and the common areas are measured from inside faces of bearing walls, dimensions having been taken from the architectural plans for said building. The area of each unit are computed accordingly in square footage and designated hereon as (S.F.).
6. The elevations shown hereon are based on actual field surveys in N.S.S.C. Datum.
7. Bold lines shown hereon indicate bearing walls or structural elements. All interior bearing walls are not shown.

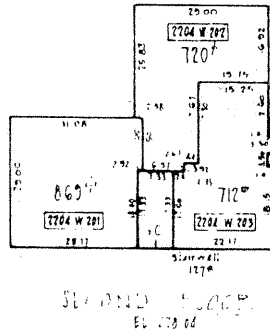
SHEET 4 OF 15
CONDOMINIUM PLAN
BUILDING NO 7 GROUP 2202 W
PHASE - I
ROCK CREEK GARDENS
CONDOMINIUM

ELECTION DISTRICT NO 13
MONTGOMERY COUNTY, MARYLAND
SCALE 1"=20' JULY 1979

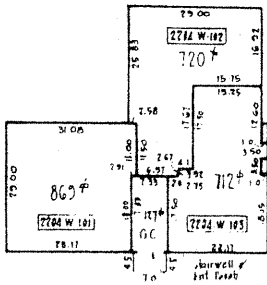
PREPARED BY
OFFICE OF
JAMES M. FOWLER
27 W. JEFFERSON ST., ROCK, MD.
PO. 8-2377



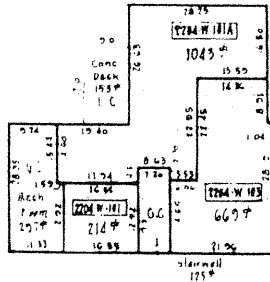
1ST AREA LEVEL
05.28.78



SECOND FLOOR
05.28.78



FIRST FLOOR
05.28.78



BASEMENT AREA LEVEL
05.28.78

BUILDING NO 7 GROUP 2204 W

SURVEYOR'S CERTIFICATE

I hereby certify that the plan of condominium shown hereon is correct that it is a subdivision of the floors of Building No. 7 (Group 2204 W, Rock Creek Garden Condominium as shown on sheet 2 of 15) and as part of this plan of condominium.

Date Dec 19 1978

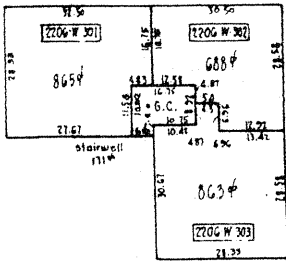
James M. Fowler, Jr.
Professional Land Surveyor
Maryland Reg. No. 4214

NOTES

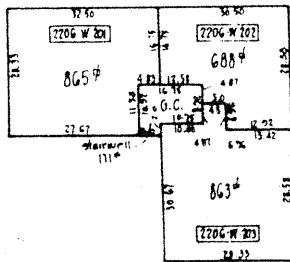
1. This unit group is a 2 story structure with a basement and a left area level and includes 7 condominium units.
2. Each condominium unit as shown hereon is designated by a combination of a letter and number. A typical example is shown thus: 2204 W 201. (Where: W = West; 201 = Unit No.)
3. General common areas include elevators, bearing walls, porch entrances and all items underlying the condominium units shown and designated hereon as G.C.
4. Limited common areas include balconies, terraces, decks, storage, storage and trash rooms and designated hereon as L.C.
5. The dimensions of each condominium unit, the limited common areas and the common areas are measured from inside faces of bearing walls, dimensions having been taken from the architectural plans for said building. The areas of each unit are computed accordingly in square footage and designated hereon as G.C.
6. The elevations shown hereon are based on actual field surveys in W.S.S. datum.
7. Bold lines shown hereon indicate bearing walls or structural elements. All interior bearing walls are not shown.

SHEET 5 OF 15
CONDOMINIUM PLAT
BUILDING NO 7 GROUP 2204 W
PHASE - I
ROCK CREEK GARDENS
CONDOMINIUM
ELECTION DISTRICT NO 15
MONTGOMERY COUNTY, MARYLAND
SCALE 1"=20' JULY 1979

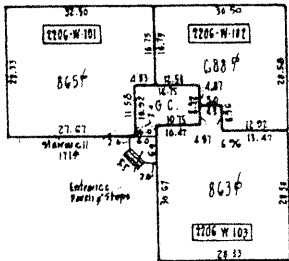
PREPARED BY
OFFICE OF
JAMES M. FOWLER
27 W. JEFFERSON ST., ROCK, MD.
PO. 3-2377



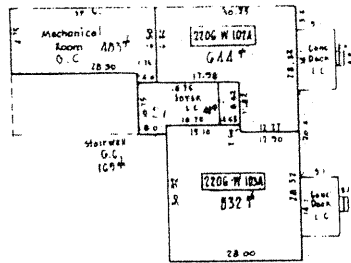
THIRD FLOOR
EL 181.08



SECOND FLOOR
EL 172.04



FIRST FLOOR
EL 263.0



BASEMENT AREA LEVEL
EL 254.0

SURVEYOR'S CERTIFICATE

I hereby certify that the plan of condominium shown hereon is correct that it is a subdivision of the floors of Building No 7 Group 2206-W, Rock Creek Garden Condominium as shown on sheet 2 of 15 filed as part of this plan of condominium.

June 20, 1980
Date

James M. Fowler, Jr.
Professional Land Surveyor
Maryland Reg. No. 4214

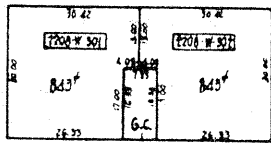
NOTES

1. This unit group is a 3 story structure with a basement area level and includes 11 condominium units.
2. Each condominium unit as shown hereon is designated by a combination of letters and numbers. A typical example is shown thus: 2206-W 101 unit's name
3. General common areas include stairwells, basements, porches, entrances, and all land underlying the condominium units shown and designated hereon as G.C.
4. Limited common areas include balconies, terraces, decks, foyers and storage and trash rooms and designated hereon as L.C.
5. The dimensions of each condominium unit, the limited common areas and the common areas are measured from inside faces of bearing walls, dimensions having been taken from the architectural plans for said building. The areas of each unit are computed accordingly in square footage and designated hereon as (G).
6. The elevations shown hereon are based on actual field surveys in W.S.S.C. Datum.
7. Bold lines shown hereon indicate bearing walls or structural elements. All interior bearing walls are not shown.

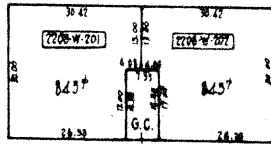
BUILDING NO 7 GROUP 2206-W

SHEET 6 OF 15
CONDOMINIUM PLAN
BUILDING NO 7 GROUP 2206-W
PHASE - I
ROCK CREEK GARDENS
CONDOMINIUM
ELECTION DISTRICT NO 13
MONTGOMERY COUNTY, MARYLAND
SCALE 1"=20' JULY 1979

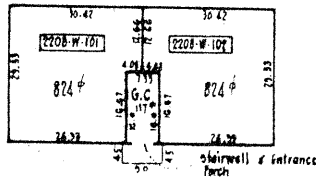
PREPARED BY
OFFICE OF
JAMES M. FOWLER
27 W. JEFFERSON ST., ROCK, MD.
PO. 8-2377



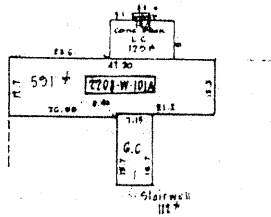
THIRD FLOOR
EL 277.08



SECOND FLOOR
EL 268.04



FIRST FLOOR
EL 259.00



BASEMENT AREA LEVEL
EL 250.0

BUILDING NO 7 GROUP 2208-W

SURVEYOR'S CERTIFICATE

I hereby certify that the plan of condominium shown hereon is correct that it is a subdivision of the floors of Building No. 7 Group 2208-W, Rock Creek Garden Condominium as shown on sheet 2 of 15 filed as part of the plan of condominium.

Feb 20 1980
Date

James M. Fowler, Jr.
Professional Land Surveyor
Maryland Reg. No. 4214

NOTES

1. The unit group is a 3 story structure with a basement level and includes 7 condominium units.
2. Each condominium unit as shown hereon is designated by a combination of letters and numbers. A typical example is shown thus: 2208-W-301.
3. General common areas include stairwells, bearing walls, porch entrances, and oil land underlying the condominium units shown and designated hereon as G.C.
4. Limited common areas include balconies, terraces, decks, loggias, and storage and trash rooms, and designated hereon as L.C.
5. The dimensions of each condominium unit, the limited common areas and the common areas are measured from inside faces of bearing walls, dimensions having been taken from the architectural plans for said building. The areas of each unit are computed accordingly in square footage and designated hereon as ϕ .
6. The elevations shown hereon are based on actual field surveys in W.S.S.C. Datum.
7. Bold lines shown hereon indicate bearing walls or structural elements. All interior bearing walls are not shown.

SHEET 7 OF 15
CONDOMINIUM PLAN
BUILDING NO 7 GROUP 2208-W
PHASE - I
ROCK CREEK GARDENS
CONDOMINIUM
ELECTION DISTRICT NO 15
MONTGOMERY COUNTY, MARYLAND
SCALE 1"=20' JULY 1979

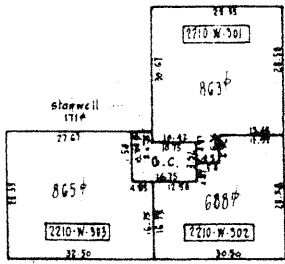
PREPARED BY
OFFICE OF
JAMES M. FOWLER, JR.
27 W. JEFFERSON ST., ROCK, MD.
PD. 2-2377

SURVEYOR'S CERTIFICATE

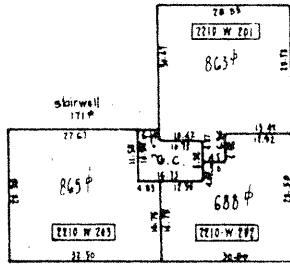
I hereby certify that the plan of condominium shown hereon is correct that it is a subdivision of the floors of Building No. 7, Group 2210 W., Rock Creek Garden Condominium as shown on sheet 2 of 15 filed as part of this plan of condominium.

Feb. 20 1980
Date

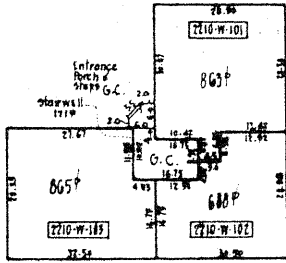
James M. Fowler, Jr.
Professional Land Surveyor
Maryland Reg. No. 4214



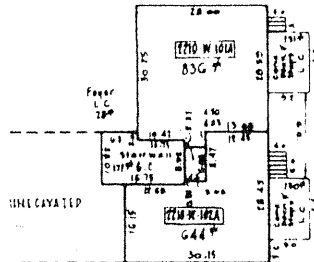
THIRD FLOOR
EL. 277.06



SECOND FLOOR
EL. 268.04



FIRST FLOOR
EL. 259



BASEMENT AREA LEVEL
EL. 250.0

NOTES

1. The unit group is a 3 story structure with a basement level and includes 11 condominium units.
2. Each condominium unit as shown hereon is designated by a combination of letters and numbers. A typical example is shown thus: 865P.
3. General common areas include stairwells, bearing walls, perimeters and all land underlying the condominium units shown and designated hereon as G.C.
4. Limited common areas include balconies, terraces, decks, foyers and storage and trash rooms and designated hereon as L.C.
5. The dimensions of each condominium unit, the limited common areas and the common areas are measured from inside faces of bearing walls, dimensions having been taken from the architectural plans for said building. The areas of each unit are computed accordingly in square footage and designated hereon as S.F.
6. The elevations shown hereon are based on actual field surveys in U.S.C. Datum.
7. Bold lines shown hereon indicate bearing walls or structural elements. All interior bearing walls are not shown.

SHEET 0 OF 15
CONDOMINIUM PLAT
BUILDING NO 7 GROUP 2210-W
PHASE - I
ROCK CREEK GARDENS
CONDOMINIUM
ELECTION DISTRICT NO 15
MONTGOMERY COUNTY, MARYLAND
SCALE 1"=20' JULY 1979

PREPARED BY
OFFICE OF
JAMES M. FOWLER
27 W. JEFFERSON ST., ROCK, MD.
PG. 3-2577

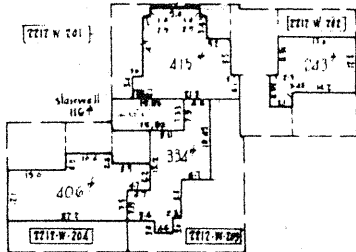
BUILDING NO 7 GROUP 2210-W

SURVEYOR'S CERTIFICATE

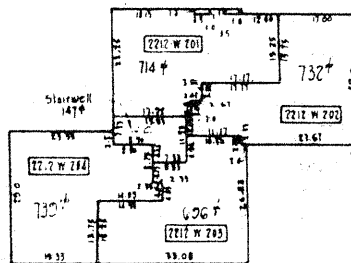
I hereby certify that the plan of condominium shown hereon is correct that it is a subdivision of the floors of Building No 7 Group 2212-W, Rock Creek Gardens Condominium as shown on sheet 2 of 15 filed as part of the plan of condominium.

July 20 1980
Date

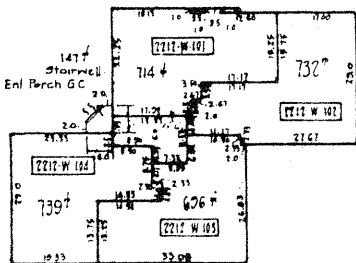
James M. Fowler, Jr.
Professional Land Surveyor
Maryland Reg. No. 4214



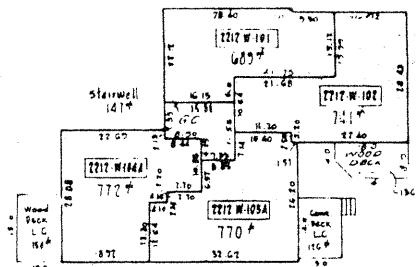
LOFT AREA LEVEL
EL. 274.06



SECOND FLOOR
EL. 265.04



FIRST FLOOR
EL. 258.00



BASEMENT AREA LEVEL
EL. 249.00

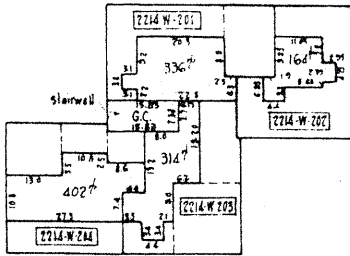
BUILDING NO 7 GROUP 2212 W

NOTES

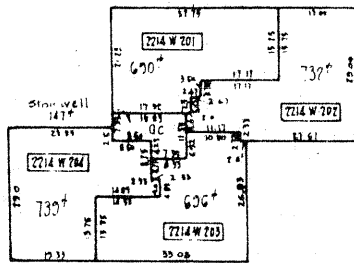
1. The unit group is a 2 story structure with a basement and loft area level and includes 10 condominium units.
2. Each condominium unit as shown hereon is designated by a combination of letters and numbers. A typical example is shown thus: [2212-W-101].
3. General common areas include stairwells, bearing walls, porch entrances and all lands underlying the condominium units shown and designated hereon as GC.
4. Limited common areas include balconies, terraces, decks, foyers and storage, and trash rooms and designated hereon as LC.
5. The dimensions of each condominium unit, the limited common areas and the common areas are measured from inside faces of bearing walls, dimensions having been taken from the architectural plans for said building. The areas of each unit are computed accordingly in square footage and designated hereon as SF.
6. The elevations shown hereon are based on actual field surveys in V.S.S.C. Datum.
7. Dotted lines shown hereon indicate bearing walls or structural elements. All interior bearing walls are not shown.

SHEET 2 OF 15
CONDOMINIUM PLAN
BUILDING NO 7 GROUP 2212 W
PHASE - I
ROCK CREEK GARDENS
CONDOMINIUM
ELECTION DISTRICT NO 15
MONTGOMERY COUNTY, MARYLAND
SCALE 1"=20' JULY 1979

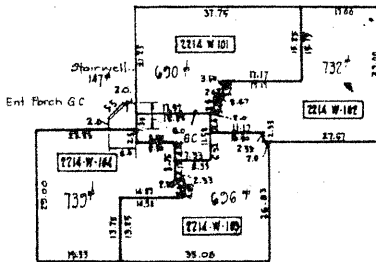
PREPARED BY
OFFICE OF
JAMES M. FOWLER
27 W. JEFFERSON ST., ROCK, MD.
PG. 9-2377



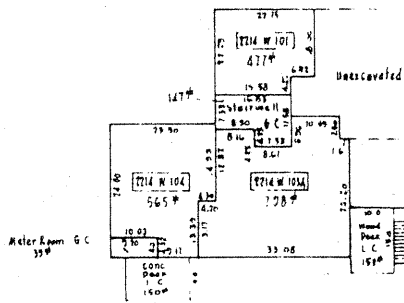
LOFT AREA LEVEL
EL 286.08



SECOND FLOOR
EL 277.04



FIRST FLOOR
EL 268.00



BASEMENT AREA LEVEL
EL 259.00

SURVEYOR'S CERTIFICATE

I hereby certify that the plan of condominium shown hereon is correct that it is a subdivision of the floors of Building No. 6 Group 2214-W, Rock Creek Garden Condominium as shown on sheet 2 of 15 filed as part of the plan of condominium.

JUL 20 1979
Date

James M. Fowler, Jr.
Professional L and Surveyor
Maryland Reg. No. 4214

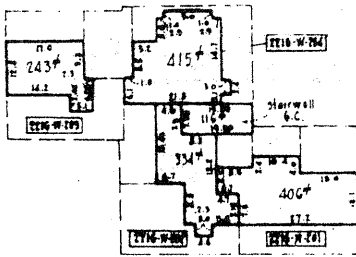
NOTES

1. This unit group is a 2 story structure with a basement and loft area level and includes 20 condominium units.
2. Each condominium unit as shown hereon is designated by a combination of letters and numbers. A typical example is shown thus: **10W-310** (meter room).
3. General common areas include stairwells, bearing walls, porch entrances and all land underlying the condominium units shown and designated hereon as GC.
4. Limited common areas include balconies, terraces, decks, foyers, and storage and trash rooms and designated hereon as LC.
5. The dimensions of each condominium unit, the limited common areas and the common areas are measured from inside faces of bearing walls, dimensions having been taken from the architectural plans for said building. The areas of each unit are computed accordingly in square footage and designated hereon as G.
6. The elevations shown hereon are based on actual field surveys in W.S.S.C. datum.
7. Bold lines shown hereon indicate bearing walls or structural elements. All interior bearing walls are not shown.

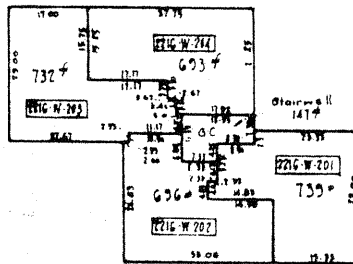
SHEET 10 OF 15
CONDOMINIUM PLAN
BUILDING NO. 6 GROUP 2214-W
PHASE - I
**ROCK CREEK GARDENS
CONDOMINIUM**
ELECTION DISTRICT NO. 13
MONTGOMERY COUNTY, MARYLAND
SCALE 1"=20' JULY 1979

PREPARED BY
OFFICE OF
JAMES M. FOWLER
27 W. JEFFERSON ST., ROCK, MD.
PD. 3-2377

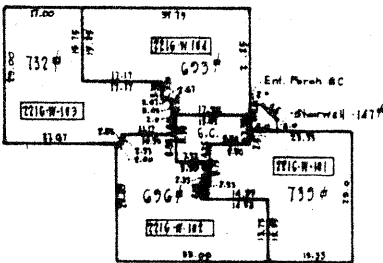
BUILDING NO. 6 GROUP 2214-W



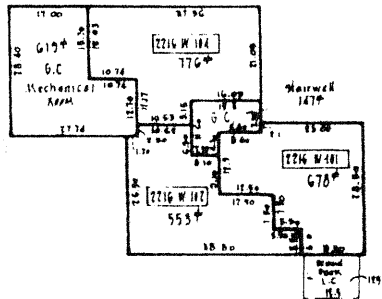
LOFT AREA LEVEL
EL 200.00



SECOND FLOOR
EL 202.00



FIRST FLOOR
EL 210.00



BASEMENT AREA LEVEL
EL 261.00

BUILDING NO. 6 GROUP 2216-W

SURVEYOR'S CERTIFICATE

I hereby certify that the plan of condominium shown hereon is correct that it is a subdivision of the floors of Building No. 6 Group 2216-W Rock Creek Garden Condominium as shown on sheet 2 of 10 filed as part of the plan of condominium.

Filed 12 1980
Date

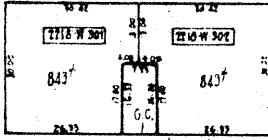
James M. Fowler, Jr.
James M. Fowler, Jr.
Professional Land Surveyor
Maryland Reg. No. 4214

NOTES

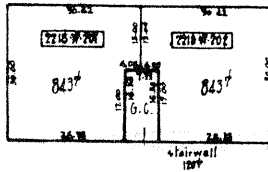
1. This unit group is a 7 story structure with a basement and loft area level and includes 2216-W condominium units.
2. Each condominium unit as shown hereon is designated by a combination of letters and numbers. A typical example is shown thus: 2216-W-101.
3. General common areas include stairwells, bearing walls, porch entrances, and all land underlying the condominium units shown and designated hereon as G.C.
4. Limited common areas include balconies, terraces, decks, foyers and storage and trash rooms and designated hereon as L.C.
5. The dimensions of each condominium unit, the heated common areas and the common areas are measured from inside faces of bearing walls, dimensions having been taken from the architectural plans for said building. The area of each unit are computed accordingly in square footings and designated hereon as G.
6. The elevations shown hereon are based on actual field surveys in V.T.S.C. Datum.
7. Bold lines shown hereon indicate bearing walls or structural elements. All interior bearing walls are not shown.

SHEET 11 OF 15
CONDOMINIUM PLAN
BUILDING NO. 6 GROUP 2216-W
PHASE - I
ROCK CREEK GARDENS
CONDOMINIUM
ELECTION DISTRICT NO. 13
MONTGOMERY COUNTY, MARYLAND
SCALE 1"=20' JULY 1979

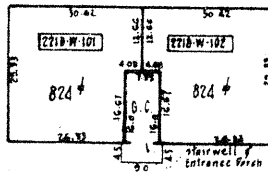
PREPARED BY
OFFICE OF
JAMES M. FOWLER, JR.
37 W. JEFFERSON ST., ROCK, MD.
PG. 9-8777



THIRD FLOOR
EL. 292.08



SECOND FLOOR
EL. 283.04



FIRST FLOOR
EL. 274.00

SURVEYOR'S CERTIFICATE

I hereby certify that the plan of condominium shown hereon is correct that it is a subdivision of the floors of Building No. 6 Group 2218 W, Rock Creek Gardens Condominium as shown on sheet 2 of 15 filed as part of this plan of condominium.

Filed 20. 1980
Date

James M. Fowler, Jr.
James M. Fowler, Jr.
Professional Land Surveyor
Maryland Reg. No. 4214

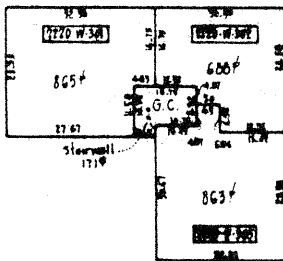
NOTES

1. This unit group is a 5 story structure and includes 5 condominium units per floor creating a total of nine (9) condominium units.
2. Each condominium unit as shown hereon is designated by a combination of letters and numbers. A typical example is shown thus: **2218-W-301**
3. General common areas include stairwells, bearing walls, porch entrances and all land underlying the condominium units shown and designated hereon as G.C.
4. Limited common areas include balconies, terraces, decks, flyers and storage and trash rooms and designated hereon as L.C.
5. The dimensions of each condominium unit, the limited common areas and the common areas are measured from inside faces of bearing walls, dimensions having been taken from the architectural plans for said building. The area of each unit are computed accordingly in square footage and designated hereon as **(S)**.
6. The elevations shown hereon are based on actual field surveys in W.S.C. Datum.
7. Bold lines shown hereon indicate bearing walls or structural elements. All interior bearing walls are not shown.

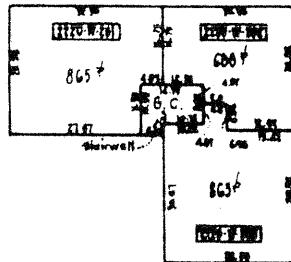
BUILDING NO 6 GROUP 2218-W

SHEET 12 OF 15
CONDOMINIUM PLAN
BUILDING NO 6 GROUP 2218-W
PHASE - I
ROCK CREEK GARDENS
CONDOMINIUM
ELECTION DISTRICT NO 15
MONTGOMERY COUNTY, MARYLAND
SCALE 1"=20' JULY 1979

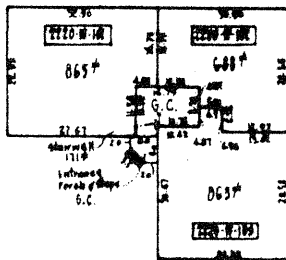
PREPARED BY
OFFICE OF
JAMES M. FOWLER
27 W. JEFFERSON ST., ROCK, MD.
PO. 8-2377



THIRD FLOOR
FL. 276.1



SECOND FLOOR
FL. 267.05



FIRST FLOOR
FL. 278.00

BUILDING NO 6 GROUP 2220-W

SURVEYOR'S CERTIFICATE

I hereby certify that the plan of condominium shown hereon is correct that it is a subdivision of the floors of Building No. 6 Group 2220-W, Rock Creek Garden Condominiums as shown on sheet 1 of 15 filed as part of the plan of condominium.

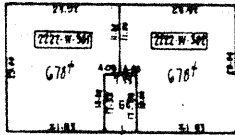
Filed: 20 1970
Date: _____
James M. Fowler, Jr.
Professional Land Surveyor
Maryland Reg. No. 4214

NOTES

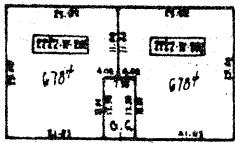
1. This unit group is a 3 story structure and includes 3 condominium units per floor creating a total of nine (9) condominium units.
2. Each condominium unit as shown hereon is distinguished by a combination of letters and numbers. A typical example is shown here: 865-W-301.
3. Shared common areas include elevators, corridors, trash enclosures and all land underlying the condominium units shown and described hereon as G.C.
4. Limited common areas include balconies, terraces, decks, steps and storage and trash rooms and designated hereon as L.C.
5. The dimensions of each condominium unit, the limited common areas and the common areas are measured from inside faces of bearing walls, dimensions having been taken from the architectural plans for said building. The areas of each unit are computed accordingly in square footage and designated hereon as S.F.
6. The elevations shown hereon are based on actual field surveys in M.S.C. Datum.
7. Bold lines shown hereon indicate bearing walls or structural elements. All interior bearing walls are not shown.

SHEET 15 OF 15
CONDOMINIUM PLAT
BUILDING NO 6 GROUP 2220-W
PHASE - I
ROCK CREEK GARDENS
CONDOMINIUM
ELECTION DISTRICT NO 15
MONTGOMERY COUNTY, MARYLAND
SCALE: 1"=20' JULY 1970

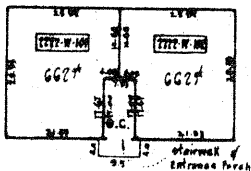
PREPARED BY
OFFICE OF
JAMES M. FOWLER, JR.
27 W. JEFFERSON ST., ROCK, MD.
PG. 8-8977



THIRD FLOOR
EL 296.1



SECOND FLOOR
EL 287.69



FIRST FLOOR
EL 278.00

BUILDING NO 6 GROUP 2222-W

SURVEYOR'S CERTIFICATE

I hereby certify that the plan of condominium shown hereon is correct that it is a subdivision of the floors of Building No. 6, Group 2222-W, Rock Creek Gardens Condominium as shown on sheet 2 of 15 filed as part of this plan of condominium.

FEB 20, 1980
Date

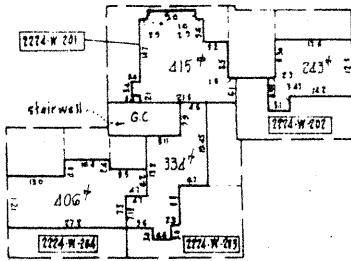
James M. Fowler, Jr.
James M. Fowler, Jr.
Professional Land Surveyor
Maryland Reg. No. 4214

NOTES

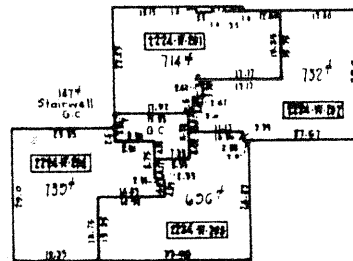
1. This unit group is a 1 story structure and includes 2 condominium units per floor creating a total of six (6) condominium units.
2. Each condominium unit as shown hereon is delineated by a combination of letters and numbers. A typical example is shown here: 678-2-201.
3. General common areas include elevators, bearing walls, porch entrances and all land underlying the condominium units shown and designated hereon as G.C.
4. Limited common areas include balconies, terraces, decks, bays and storage and trash rooms and designated hereon as L.C.
5. The dimensions of each condominium unit, the limited common areas and the common areas are measured from inside faces of bearing walls, dimensions having been taken from the architectural plans for said building. The areas of each unit are computed accordingly in square footage and designated hereon as (S.F.).
6. The elevations shown hereon based on actual field surveys in N.S.C. Datum.
7. Bold lines shown hereon indicate bearing walls or structural elements. All interior walls are not shown.

SHEET 14 OF 15
CONDOMINIUM PLAT
BUILDING NO 6 GROUP 2222-W
PHASE - I
**ROCK CREEK GARDENS
CONDOMINIUM**
ELECTION DISTRICT NO 13
MONTGOMERY COUNTY, MARYLAND
SCALE 1"=20' JULY 1979

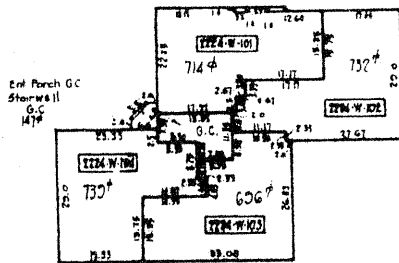
PREPARED BY
OFFICE OF
JAMES M. FOWLER
27 W. JEFFERSON ST., ROCK, MD.
PL. 8-8377



LOFT AREA LEVEL
EL. 277.01



SECOND FLOOR
EL. 279.64



FIRST FLOOR
EL. 280.6

SURVEYOR'S CERTIFICATE

I hereby certify that the plan of condominium shown hereon is correct that it is a subdivision of the floors of Building No. 6 (Group 2224-W, Rock Creek Garden Condominium) as shown on sheet 2 of 15 filed as part of this plan of condominium.

Feb 20 1980
Date

James M. Fowler, Jr.
James M. Fowler, Jr.
Professional Land Surveyor
Maryland Reg. No. 4214

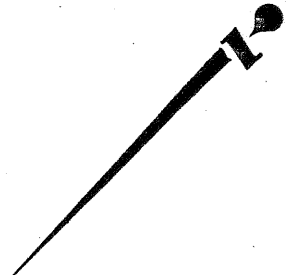
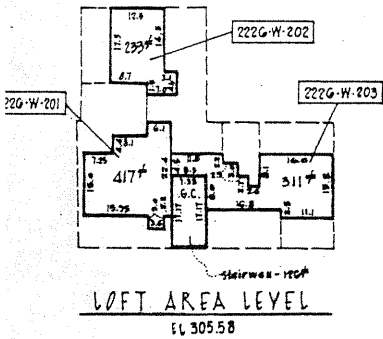
NOTES

1. The unit group is a 2 story structure with a loft area level and includes 6 condominium units.
2. Each condominium unit as shown hereon is designated by a combination of letters and numbers. A typical example is shown thus: 2224-W-101.
3. General common areas include stairwells, bearing walls, porch entrances and all land underlying the condominium units shown and designated hereon as G.C.
4. Limited common areas include balconies, terraces, decks, flagpoles and storage and trash rooms, and designated hereon as L.C.
5. The dimensions of each condominium unit, the limited common areas and the common areas are measured from inside faces of bearing walls, dimensions having been taken from the architectural plans for said building. The areas of each unit are computed accordingly in square footage and designated hereon as S.F.
6. The elevations shown hereon are based on actual field surveys in N.S.S.C. Datum.
7. Solid lines shown hereon indicate bearing walls or structural elements. All interior bearing walls are not shown.

BUILDING NO 6 GROUP 2224-W

SHEET 15 OF 15
CONDOMINIUM PLAN
BUILDING NO 6 GROUP 2224-W
PHASE - I
**ROCK CREEK GARDENS
CONDOMINIUM**
ELECTION DISTRICT NO 15
MONTGOMERY COUNTY, MARYLAND
SCALE: 1" = 20' JULY 1979

PREPARED BY
OFFICE OF
JAMES M. FOWLER
27 W. JEFFERSON ST., ROCK, MD.
PL. 2-2377

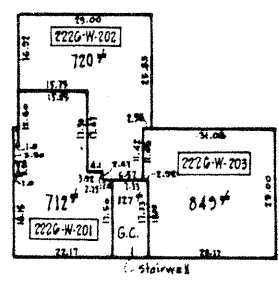


SURVEYOR'S CERTIFICATE

I hereby certify that the plan of condominium shown herein is correct that it is a subdivision of the floors of Building No. 5 Group 222G-W, Rock Creek Garden Condominium as shown on sheet 1 of 19 filed as part of this plan of condominium.

Oct 17 1980
Date

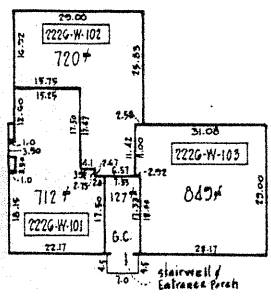
James M. Fowler, Jr.
James M. Fowler, Jr.
Professional Land Surveyor
Maryland Reg. No. 4214



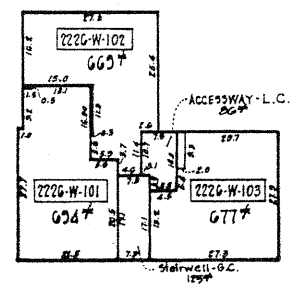
SECOND FLOOR
EL 296.54

NOTES

1. This unit group is a 2 story structure with a loft area level and a basement area level and includes 6 condominium units.
2. Each condominium unit as shown hereon is designated by a combination of letters and numbers. A typical example is shown thus: 1000-W-101
3. General common areas include stairwells, bearing walls, porch entrances, and all land underlying the condominium units shown and designated hereon as G.C.
4. Limited common areas include balconies, terraces, decks, foyers, and electrical, storage and mechanical rooms and designated hereon as L.C.
5. The dimensions of each condominium unit, the limited common areas and the common areas are measured from inside faces of bearing walls, dimensions having been taken from the architectural plans for said building. The areas of each unit are computed accordingly in square footage and designated hereon as SF.
6. The elevations shown hereon are based on actual field surveys in W.S.S.C. Datum.
7. Bold lines shown hereon indicate bearing walls or structural elements. All interior bearing walls are not shown.



FIRST FLOOR
EL 287.50



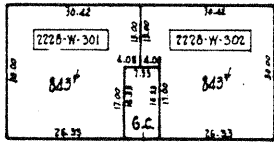
BASEMENT AREA LEVEL
EL 278.50

BUILDING NO. 5 GROUP 222G-W

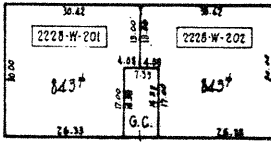
Sheet 19 of 19
CONDOMINIUM PLAT
BUILDING NO. 5 GROUP 222G-W
PHASE-II
ROCK CREEK GARDENS CONDOMINIUM
ELECTION DISTRICT NO. 13
MONTGOMERY COUNTY, MARYLAND
SCALE: 1" = 20' AUGUST, 1980

Prepared by
Office of
James M. Fowler
27 W. Jefferson St., Rock., MD.
768-2377

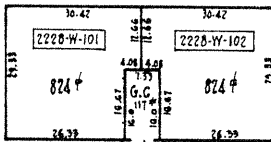
RECORDED 10/22/80
COND. P.D. - 29
PLAT - 2204



THIRD FLOOR
EL. 308.08



SECOND FLOOR
EL. 299.04



FIRST FLOOR
EL. 290.0

SURVEYOR'S CERTIFICATE

I hereby certify that the plan of condominium shown herein is correct that it is a subdivision of the floors of Building No. 5 Group 2228-W, Rock Creek Garden Condominium as shown on sheet 1 of 15 filed as part of this plan of condominium.

DATE Oct 17 1980

James M. Fowler, Jr.
James M. Fowler, Jr.
Professional Land Surveyor
Maryland Reg. No. 4214

NOTES

1. This unit group is a 3 story structure and includes 2 condominium units per floor creating a total of SIX (6) condominium units.
2. Each condominium unit as shown hereon is designated by a combination of letters and numbers. A typical example is shown thus: 2000-W-101
3. General common areas include stairwells, bearing walls, porch entrances, and all land underlying the condominium units shown and designated hereon as G.C.
4. Limited common areas include balconies, terraces, decks, foyers, and electrical, storage and mechanical rooms and designated hereon as L.C.
5. The dimensions of each condominium unit, the limited common areas and the common areas are measured from inside faces of bearing walls, dimensions having been taken from the architectural plans for said building. The areas of each unit are computed accordingly in square footage and designated hereon as sq. ft.
6. The elevations shown hereon are based on actual field surveys in W.S.S.C. Datum.
7. Bold lines shown hereon indicate bearing walls or structural elements. All interior bearing walls are not shown.

Sheet 16 of 15

CONDOMINIUM FLAT
BUILDING NO. 5 GROUP 2228-W
PHASE-II

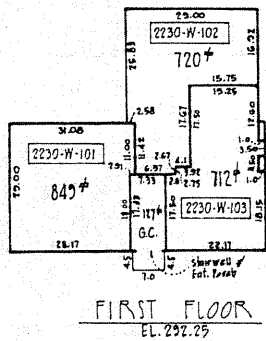
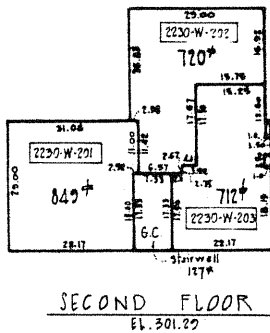
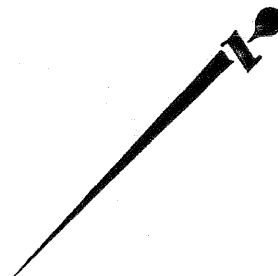
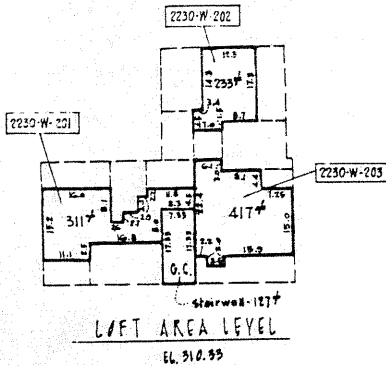
ROCK CREEK
GARDENS
CONDOMINIUM

ELECTION DISTRICT NO. 13
MONTGOMERY COUNTY, MARYLAND
SCALE: 1" = 20' AUGUST, 1980

Prepared by
Office of
James M. Fowler
27 W. Jefferson St., Rock., MD.
768-2377

RECORDED 10/22/80
CONDO. P.B. 23
PLAT-2805

BUILDING NO 5 GROUP 2228-W



SURVEYOR'S CERTIFICATE

I hereby certify that the plan of condominium shown herein is correct that it is a subdivision of the floors of Building No. 5 Group 2230-W, Rock Creek Garden Condominium as shown on sheet 1 of 17) as part of this plan of condominium.

Oct. 17, 1980
Date

James M. Fowler, Jr.
James M. Fowler, Jr.
Professional Land Surveyor
Maryland Reg. No. 4214

NOTES

1. This unit group is a 2 story structure with a loft area level and includes G condominium units.
2. Each condominium unit as shown herein is designated by a combination of letters and numbers. A typical example is shown thus: [1000-W-101]
3. General common areas include stairwells, bearing walls, porch entrances, and all land underlying the condominium units shown and designated herein as G.C.
4. Limited common areas include balconies, terraces, decks, foyers, and electrical, storage and mechanical rooms and designated herein as L.C.
5. The dimensions of each condominium unit, the limited common areas and the common areas are measured from inside faces of bearing walls, dimensions having been taken from the architectural plans for said building. The areas of each unit are computed accordingly in square footage and designated herein as (sq ft).
6. The elevations shown herein are based on actual field surveys in W.S.S.C. Datum.
7. Bold lines shown herein indicate bearing walls or structural elements. All interior bearing walls are not shown.

Sheet 17 of 18

CONDOMINIUM PLAT
BUILDING NO. 5 GROUP 2230-W
PHASE-II

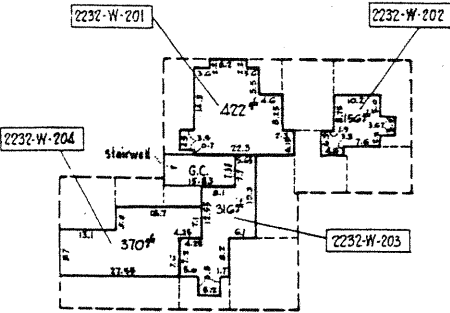
ROCK CREEK
GARDENS
CONDOMINIUM
ELECTION DISTRICT NO. 13
MONTGOMERY COUNTY, MARYLAND
SCALE: 1" = 20' AUGUST, 1980

Prepared by
Office of
James M. Fowler
27 W. Jefferson St., Rock., MD.
768-2377

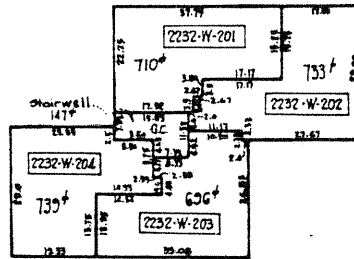
RECORDED 10/22/80
COMD.P.L.B.-25
PLAT-2302

BUILDING NO 5 GROUP 2230-W

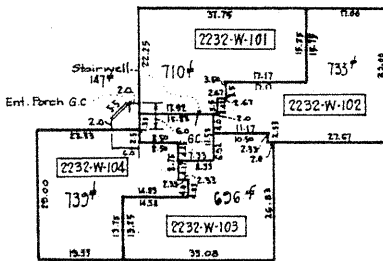
79-032



LOFT AREA LEVEL
EL. 307.08



SECOND FLOOR
EL. 298.04



FIRST FLOOR
EL. 289.0

SURVEYOR'S CERTIFICATE

I hereby certify that the plan of condominium shown herein is correct that it is a subdivision of the floors of Building No. 4 Group 2232-W, Rock Creek Garden Condominium as shown on sheet 1 of 13 filed as part of this plan of condominium.

Oct. 17 1980
Date

James M. Fowler, Jr.
James M. Fowler, Jr.
Professional Land Surveyor
Maryland Reg. No. 4214

NOTES

1. This unit group is a 2 story structure with a loft area level and includes 6 condominium units.
2. Each condominium unit as shown hereon is designated by a combination of letters and numbers. A typical example is shown thus: 1000-W-101
3. General common areas include stairwells, bearing walls, porch entrances, and all land underlying the condominium units shown and designated hereon as G.C.
4. Limited common areas include balconies, terraces, decks, foyers, and electrical, storage and mechanical rooms and designated hereon as L.C.
5. The dimensions of each condominium unit, the limited common areas and the common areas are measured from inside faces of bearing walls, dimensions having been taken from the architectural plans for said building. The areas of each unit are computed accordingly in square footage and designated hereon as sq.
6. The elevations shown hereon are based on actual field surveys in W.S.S.C. Datum.
7. Bold lines shown hereon indicate bearing walls or structural elements. All interior bearing walls are not shown.

Sheet 16 of 19

CONDOMINIUM PLAT
BUILDING NO. 4 GROUP 2232-W
PHASE-II

ROCK CREEK
GARDENS
CONDOMINIUM
ELECTION DISTRICT NO. 13
MONTGOMERY COUNTY, MARYLAND
SCALE: 1" = 20' AUGUST, 1980

Prepared by
Office of
James M. Fowler
27 W. Jefferson St., Rock, MD.
708-2377

RECORDED 10/22/80
CONDO. T.D. '85
PLAT - 2501

BUILDING NO 4 GROUP 2232-W

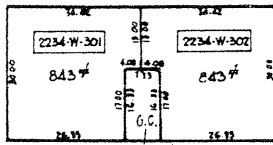
79-032

SURVEYOR'S CERTIFICATE

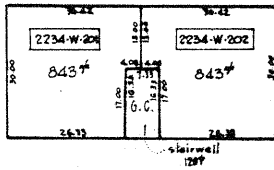
I hereby certify that the plan of condominium shown herein is correct that it is a subdivision of the floors of Building No. 4 Group 2234-W Rock Creek Garden Condominium as shown on sheet 1 of 19 filed as part of this plan of condominium.

Oct 17, 1980
Date

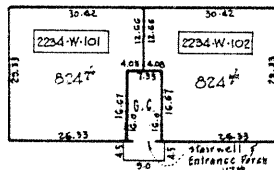
James M. Fowler, Jr.
James M. Fowler, Jr.
Professional Land Surveyor
Maryland Reg. No. 4214



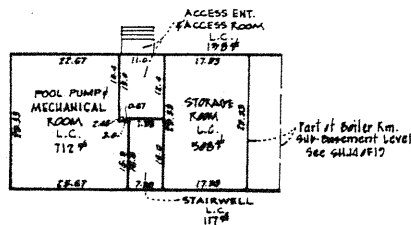
THIRD FLOOR
EL. 304.08



SECOND FLOOR
EL. 295.04



FIRST FLOOR
EL. 286.0



BASEMENT AREA LEVEL
EL. 277.0

BUILDING NO 4 GROUP 2234-W

NOTES

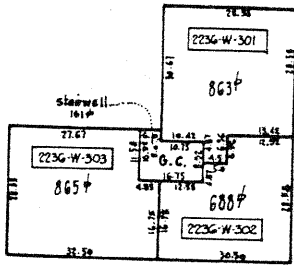
1. This unit group is a 3-story structure with a basement area level and includes G condominium units.
2. Each condominium unit as shown hereon is designated by a combination of letters and numbers. A typical example is shown thus: 1000-W-101.
3. General common areas include stairwells, bearing walls, porch entrances, and all land underlying the condominium units shown and designated hereon as G.C.
4. Limited common areas include balconies, terraces, decks, foyers, and electrical, storage and mechanical rooms and designated hereon as L.C.
5. The dimensions of each condominium unit, the limited common areas and the common areas are measured from inside faces of bearing walls, dimensions having been taken from the architectural plans for said building. The areas of each unit are computed accordingly in square footage and designated hereon as sq ft .
6. The elevations shown hereon are based on actual field surveys in W.S.S.C. Datum.
7. Bold lines shown hereon indicate bearing walls or structural elements. All interior bearing walls are not shown.

Sheet 15 of 19
CONDOMINIUM PLAN
BUILDING NO. 4 GROUP 2234-W
PHASE-II
**ROCK CREEK
GARDENS
CONDOMINIUM**
ELECTION DISTRICT NO. 13
MONTGOMERY COUNTY, MARYLAND
SCALE: 1" = 20' AUGUST, 1980

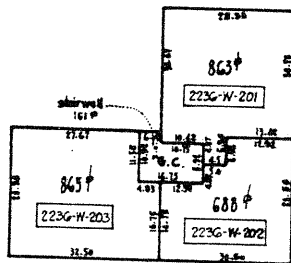
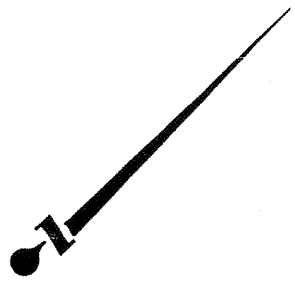
Prepared by
Office of
James M. Fowler
27 W. Jefferson St., Rock, MD.
768-2377

RECORDED 10/22/80
CONDO. P.B. 23
PLAT-2300

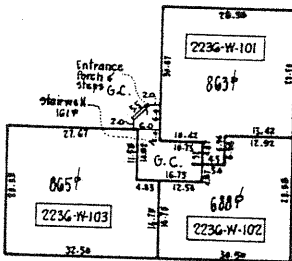
79-032



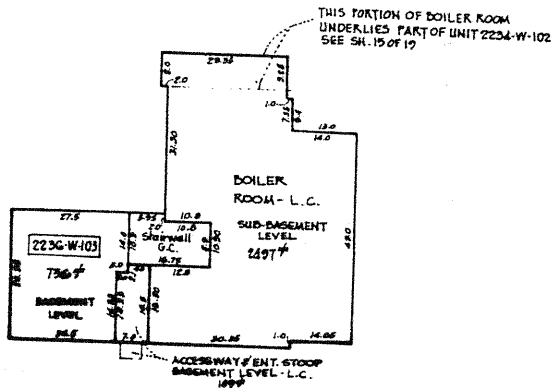
THIRD FLOOR
EL. 304.08



SECOND FLOOR
EL. 295.04



FIRST FLOOR
EL. 286.0



SUB-BASEMENT AND BASEMENT AREA LEVELS
BASEMENT FL. EL. 277.0 SUB-BASEMENT FL. EL. 266.0

SURVEYOR'S CERTIFICATE

I hereby certify that the plan of condominium shown herein is correct that it is a subdivision of the floors of Building No. 4 Group 223G-W, Rock Creek Garden Condominium as shown on sheet 1 of 13 filed as part of this plan of condominium.

Oct 17 1980
Date
James M. Fowler, Jr.
Professional Land Surveyor
Maryland Reg. No. 4214

NOTES

1. This unit group is a 3 story structure with a ^{sub-basement} basement and a condominium units
2. Each condominium unit as shown herein is designated by a combination of letters and numbers. A typical example is shown thus: [2000-W-101]
3. General common areas include stairwells, bearing walls, porch entrances, and all land underlying the condominium units shown and designated herein as G.C.
4. Limited common areas include balconies, terraces, decks, foyers, and electrical, storage and mechanical rooms and designated herein as L.C.
5. The dimensions of each condominium unit, the limited common areas and the common areas are measured from inside faces of bearing walls, dimensions having been taken from the architectural plans for said buildings. The areas of each unit are computed accordingly in square footage and designated herein as \pm
6. The elevations shown herein are based on actual field surveys in W.S.S.C. Datum.
7. Bold lines shown herein indicate bearing walls or structural elements. All interior bearing walls are not shown.

Sheet 14 of 13

CONDOMINIUM FLAT
BUILDING NO. 4 GROUP 223G-W
PHASE-II

ROCK CREEK
GARDENS
CONDOMINIUM
ELECTION DISTRICT NO. 13
MONTGOMERY COUNTY, MARYLAND
SCALE: 1" = 20' AUGUST, 1980

Prepared by
Office of
James M. Fowler
27 W. Jefferson St., Rock., MD.
788-2377

RECORDED 10/22/80
COND. P.D. 25
PLAT-2277

BUILDING NO 4 GROUP 223G-W

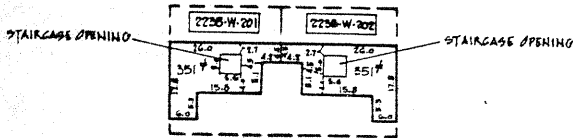
79-032

SURVEYOR'S CERTIFICATE

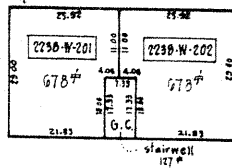
I hereby certify that the plan of condominium shown herein is correct that it is a subdivision of the floors of Building No. 4 Group 2238-W, Rock Creek Garden Condominium as shown on sheet 1 of 13 filed as part of this plan of condominium.

OCT. 17, 1980
Date

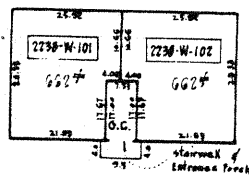
James M. Fowler, Jr.
James M. Fowler, Jr.
Professional Land Surveyor
Maryland Reg. No. 4214



LOFT AREA LEVEL
EL. 303.08



SECOND FLOOR
EL. 294.04



FIRST FLOOR
EL. 285.0

1. This unit group is a 2 story structure with a loft area level and includes 4 condominium units.
2. Each condominium unit as shown hereon is designated by a combination of letters and numbers. A typical example is shown thus: 1000-W-101
3. General common areas include stairwells, bearing walls, porch entrances, or land underlying the condominium units shown and designated hereon as G.C.
4. Limited common areas include balconies, terraces, decks, foyers, and electric storage and mechanical rooms and designated hereon as L.C.
5. The dimensions of each condominium unit, the limited common areas and the common areas are measured from inside faces of bearing walls, dimensions have been taken from the architectural plans for said building. The areas of each unit computed accordingly in square footage and designated hereon as sq. ft.
6. The elevations shown hereon are based on actual field surveys in W.S.S.C. 1
7. Bold lines shown hereon indicate bearing walls or structural elements. All other bearing walls are not shown.

Sheet 13 of 13

CONDOMINIUM PLAT
BUILDING NO. 4 GROUP 2238-W
PHASE-II

ROCK CREEK GARDENS CONDOMINIUM

ELECTION DISTRICT NO. 13
MONTGOMERY COUNTY, MARYLAND
SCALE: 1" = 20' AUGUST, 1980

Prepared by
Office of
James M. Fowler
27 W. Jefferson St., Rock., MD.
762-2377

RECORDED &
CONDO. P.B.
PLAT - 2

BUILDING NO 4

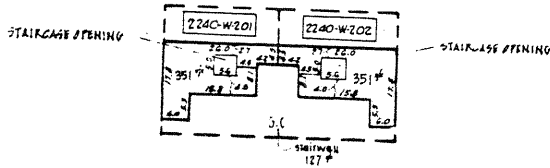
GROUP 2238-W

SURVEYOR'S CERTIFICATE

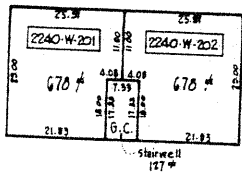
I hereby certify that the plan of condominium shown herein is correct that it is a subdivision of the floors of Building No. 3 Group 2240-W, Rock Creek Garden Condominium as shown on sheet 1 of 19 filed as part of this plan of condominium.

Oct. 17 1980
Date

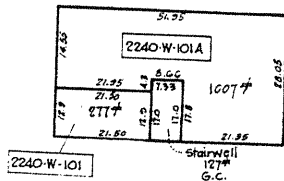
James M. Fowler, Jr.
James M. Fowler, Jr.
Professional Land Surveyor
Maryland Reg. No. 4214



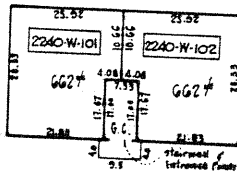
LOFT AREA LEVEL
EL. 303.08



SECOND FLOOR
EL. 294.04



BASEMENT AREA LEVEL
EL. 276.0



FIRST FLOOR
EL. 285.0

BUILDING NO 3

GROUP 2240-W

NOTES

1. This unit group is a 2 story structure with a basement and a loft area level and includes 5 condominium units.
2. Each condominium unit as shown herein is designated by a combination of letters and numbers. A typical example is shown thus: 1000-W-101.
3. General common areas include stairwells, bearing walls, porch entrances, and all land underlying the condominium units shown and designated herein as G.C.
4. Limited common areas include balconies, terraces, decks, foyers, and electrical, storage and mechanical rooms and designated herein as L.C.
5. The dimensions of each condominium unit, the limited common areas and the common areas are measured from inside faces of bearing walls, dimensions having been taken from the architectural plans for said building. The areas of each unit are computed accordingly in square footage and designated herein as SF.
6. The elevations shown herein are based on actual field surveys in W.S.S.C. Datum.
7. Bold lines shown herein indicate bearing walls or structural elements. All interior bearing walls are not shown.

Sheet 12 of 19

CONDOMINIUM FLAT
BUILDING NO. 3 GROUP 2240-W
PHASE-II

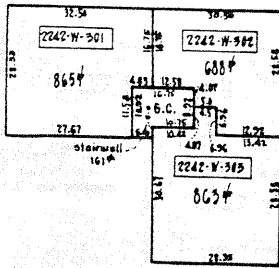
ROCK CREEK
GARDENS
CONDOMINIUM

ELECTION DISTRICT NO. 13
MONTGOMERY COUNTY, MARYLAND
SCALE: 1" = 20' AUGUST, 1980

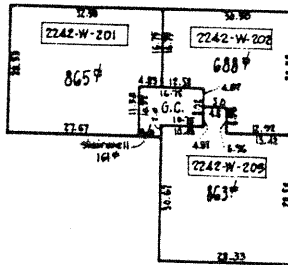
Prepared by
Office of
James M. Fowler
27 W. Jefferson St., Rock., MD.
788-2377

RECORDED 10/22/80
CONDO. P.B. - 23
PLAT - 2227

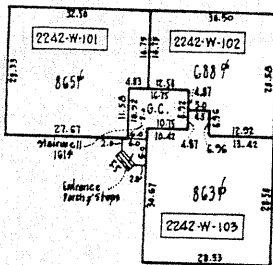
79-032



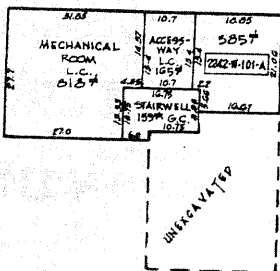
THIRD FLOOR
EL. 304.08



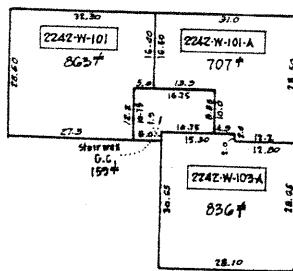
SECOND FLOOR
EL. 295.04



FIRST FLOOR
EL. 286.0



SUB-BASEMENT AREA LEVEL
EL. 264.0



BASEMENT AREA LEVEL
EL. 277.0

BUILDING NO 3 GROUP 2242-W

SURVEYOR'S CERTIFICATE

I hereby certify that the plan of condominium shown herein is correct that it is a subdivision of the floors of Building No. 3 Group 2242-W, Rock Creek Garden Condominium as shown on sheet 1 of 10 filed as part of this plan of condominium.

Oct. 17 1980
Date

James M. Fowler, Jr.
Professional Land Surveyor
Maryland Reg. No. 4214

NOTES

1. This unit group is a 3 story structure with a basement area level and a sub-basement area level and includes 10 condominium units.
2. Each condominium unit as shown herein is designated by a combination of letters and numbers. A typical example is shown thus: 1000-W-101.
3. General common areas include stairwells, bearing walls, porch entrances, and all land underlying the condominium units shown and designated herein as G.C.
4. Limited common areas include balconies, terraces, decks, foyers, and electrical, storage and mechanical rooms and designated herein as L.C.
5. The dimensions of each condominium unit, the limited common areas and the common areas are measured from inside faces of bearing walls, dimensions having been taken from the architectural plans for said building. The areas of each unit are computed accordingly in square footages and designated herein as sq ft.
6. The elevations shown herein are based on actual field surveys in W.S.S.C. Datum.
7. Bold lines shown herein indicate bearing walls or structural elements. All interior bearing walls are not shown.

Sheet 11 of 10

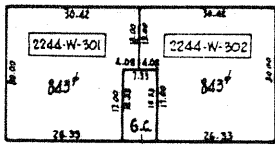
CONDOMINIUM FLAT
BUILDING NO. 3 GROUP 2242-W
PHASE-II

ROCK CREEK
GARDENS
CONDOMINIUM

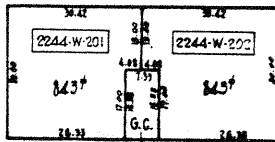
ELECTION DISTRICT NO. 13
MONTGOMERY COUNTY, MARYLAND
SCALE: 1" = 20' AUGUST, 1980

Prepared by
Office of
James M. Fowler
27 W. Jefferson St., Rock., MD.
768-2377

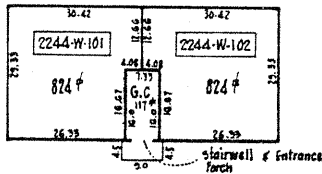
RECORDED 12/22/80
CONDO. F.B.-25
PLAT-2206



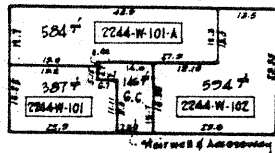
THIRD FLOOR
EL. 304.18



SECOND FLOOR
EL. 295.04



FIRST FLOOR
EL. 286.0



BASEMENT AREA LEVEL
EL. 277.0

BUILDING NO 3 GROUP 2244-W

SURVEYOR'S CERTIFICATE

I hereby certify that the plan of condominium shown herein is correct that it is a subdivision of the floors of Building No. 3 Group 2244-W, Rock Creek Garden Condominium as shown on sheet 1 of 19 filed as part of this plan of condominium.

Date Oct. 17 1980

James M. Fowler, Jr.
James M. Fowler, Jr.
Professional Land Surveyor
Maryland Reg. No. 4214

NOTES

1. This unit group is a 3 story structure with a basement area level and includes 7 condominium units
2. Each condominium unit as shown herein is designated by a combination of letters and numbers. A typical example is shown thus: 1000-W-101
3. General common areas include stairwells, bearing walls, porch entrances, and all land underlying the condominium units shown and designated herein as G.C.
4. Limited common areas include balconies, terraces, decks, foyers, and electrical, storage and mechanical rooms and designated herein as L.C.
5. The dimensions of each condominium unit, the limited common areas and the common areas are measured from inside faces of bearing walls, dimensions having been taken from the architectural plans for said building. The areas of each unit are computed accordingly in square footings and designated herein as sq ft
6. The elevations shown herein are based on actual field surveys in W.S.S.C. Datum.
7. Bold lines shown herein indicate bearing walls or structural elements. All interior bearing walls are not shown.

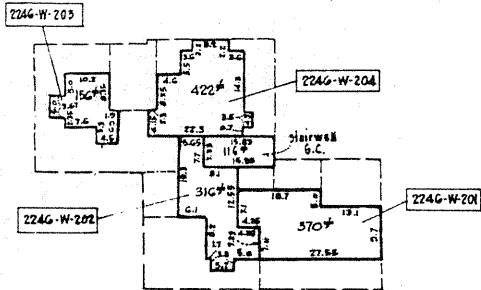
Sheet 10 of 19

CONDOMINIUM PLAT
BUILDING NO. 3 GROUP 2244-W
PHASE-II

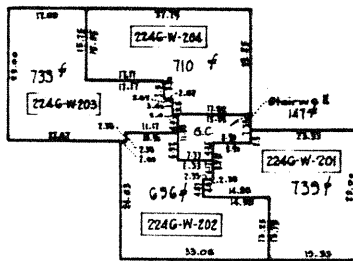
**ROCK CREEK
GARDENS
CONDOMINIUM**
ELECTION DISTRICT NO. 13
MONTGOMERY COUNTY, MARYLAND
SCALE: 1" = 20' AUGUST, 1980

Prepared by
Office of
James M. Fowler
27 W. Jefferson St., Rock., MD.
788-2377

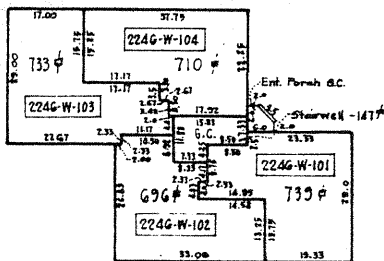
RECORDED 10/22/80
CONDO. P. O. 25
PLAT - 2205



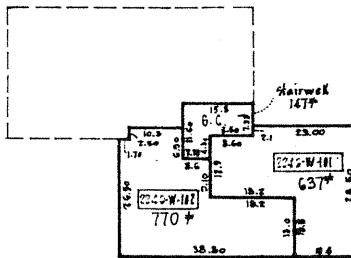
LOFT AREA LEVEL
EL. 307.00



SECOND FLOOR
EL. 298.04



FIRST FLOOR
EL. 281.0



BASEMENT AREA LEVEL
EL. 280.0

SURVEYOR'S CERTIFICATE

I hereby certify that the plan of condominium shown herein is correct that it is a subdivision of the floors of Building No. 3 Group 224G-W, Rock Creek Garden Condominium as shown on sheet 1 of 13 filed as part of this plan of condominium.

OCT. 17 1980
Date
James M. Fowler, Jr.
Professional Land Surveyor
Maryland Reg. No. 4214

NOTES

1. This unit group is a 2 story structure with a basement and a loft area level and includes 5 condominium units.
2. Each condominium unit as shown hereon is designated by a combination of letters and numbers. A typical example is shown thus: 1000-W-101.
3. General common areas include stairwells, bearing walls, porch entrances, and all land underlying the condominium units shown and designated hereon as G.C.
4. Limited common areas include balconies, terraces, decks, foyers, and electrical, storage and mechanical rooms and designated hereon as L.C.
5. The dimensions of each condominium unit, the limited common areas and the common areas are measured from inside faces of bearing walls, dimensions having been taken from the architectural plans for said building. The areas of each unit are computed accordingly in square footage and designated hereon as sq ft.
6. The elevations shown hereon are based on actual field surveys in W.S.S.C. Datum.
7. Bold lines shown hereon indicate bearing walls or structural elements. All interior bearing walls are not shown.

Sheet 9 of 13

CONDOMINIUM PLAT
BUILDING NO. 3 GROUP 224G-W
PHASE-II

ROCK CREEK GARDENS CONDOMINIUM
ELECTION DISTRICT NO. 13
MONTGOMERY COUNTY, MARYLAND
SCALE: 1" = 20' AUGUST, 1980

Prepared by
Office of
James M. Fowler
27 W. Jefferson St., Rock., MD.
781-2377

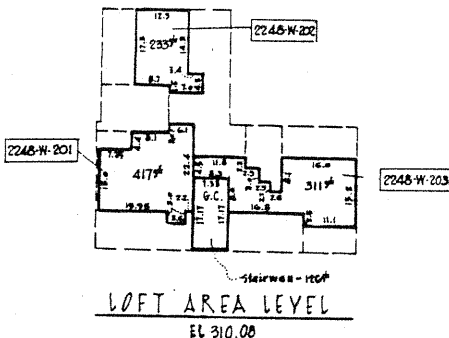
RECORDED 10/22/80
GOND. P.B. - 23
PLAT - 2224

SURVEYOR'S CERTIFICATE

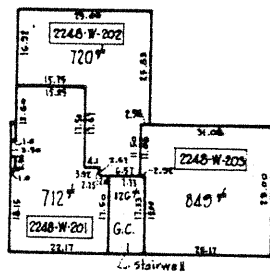
I hereby certify that the plan of condominium shown herein is correct that it is a subdivision of the floors of Building No. 2 Group 2248-W, Rock Creek Garden Condominium as shown on sheet 1 of 10 filed as part of this plan of condominium.

Oct 17 1980
Date

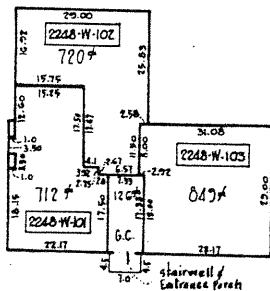
James M. Foster, Jr.
Professional Land Surveyor
Maryland Reg. No. 4214



LOFT AREA LEVEL
EL 310.00



SECOND FLOOR
EL 301.04



FIRST FLOOR
EL 292.0

NOTES

1. This unit group is a 2 story structure with a loft area level and includes G condominium units.
2. Each condominium unit as shown hereon is designated by a combination of letters and numbers. A typical example is shown thus: [1000-W-101]
3. General common areas include stairwells, bearing walls, porch entrances, and all land underlying the condominium units shown and designated hereon as G.C.
4. Limited common areas include balconies, terraces, decks, loyers, and electrical, storage and mechanical rooms and designated hereon as L.C.
5. The dimensions of each condominium unit, the limited common areas and the common areas are measured from inside faces of bearing walls, dimensions having been taken from the architectural plans for said building. The areas of each unit are computed accordingly in square footage and designated hereon as sq ft.
6. The elevations shown hereon are based on actual field surveys in W.S.S.C. Datum.
7. Bold lines shown hereon indicate bearing walls or structural elements. All interior bearing walls are not shown.

Sheet 6 of 10

CONDOMINIUM FLAT
BUILDING NO. 2 GROUP 2248-W
PHASE-II

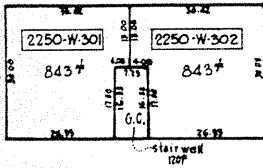
ROCK CREEK GARDENS CONDOMINIUM

ELECTION DISTRICT NO. 13
MONTGOMERY COUNTY, MARYLAND
SCALE: 1" = 20' AUGUST, 1980

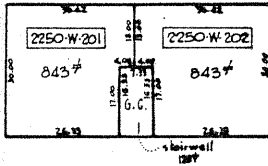
Prepared by
Office of
James M. Foster
77 W. Jefferson St., Rock., MD.
788-2371

RECORDED 10/22/80
COMOD. PB. 25
PLAT- 2223

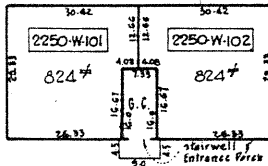
BUILDING NO 2 GROUP 2248-W



THIRD FLOOR
EL. 306.08



SECOND FLOOR
EL. 297.04



FIRST FLOOR
EL. 288.0

SURVEYOR'S CERTIFICATE

I hereby certify that the plan of condominium shown herein is correct that it is a subdivision of the floors of Building No. 2 Group 2250-W, Rock Creek Garden Condominium as shown on sheet 1 of 15 filed as part of this plan of condominium.

Oct. 17, 1980
Date

James M. Fowler, Jr.
James M. Fowler, Jr.
Professional Land Surveyor
Maryland Reg. No. 4214

NOTES

1. This unit group is a 3 story structure and includes 2 condominium units per floor creating a total of SIX (6) condominium units.
2. Each condominium unit as shown hereon is designated by a combination of letters and numbers. A typical example is shown thus: [000-W:101]
3. General common areas include stairwells, bearing walls, porch entrances, and all land underlying the condominium units shown and designated hereon as G.C.
4. Limited common areas include balconies, terraces, decks, foyers, and electrical, storage and mechanical rooms and designated hereon as L.C.
5. The dimensions of each condominium unit, the limited common areas and the common areas are measured from inside faces of bearing walls, dimensions having been taken from the architectural plans for said building. The areas of each unit are computed accordingly in square footage and designated hereon as []
6. The elevations shown hereon are based on actual field surveys in W.S.S.C. Datum.
7. Bold lines shown hereon indicate bearing walls or structural elements. All interior bearing walls are not shown.

Sheet 7 of 15

CONDOMINIUM FLAT
BUILDING NO. 2 GROUP 2250-W
PHASE-II

**ROCK CREEK
GARDENS
CONDOMINIUM**

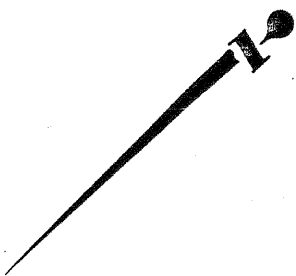
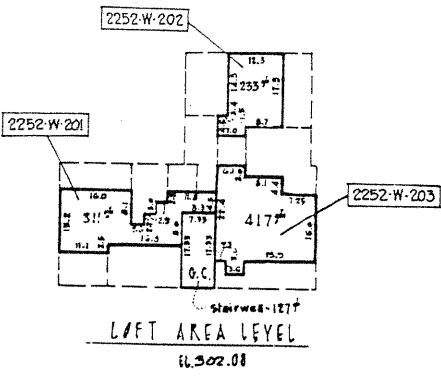
ELECTION DISTRICT NO. 13
MONTGOMERY COUNTY, MARYLAND
SCALE: 1" = 20' AUGUST, 1980

Prepared by
Office of
James M. Fowler
27 W. Jefferson St., Rock., MD.
766-2377

RECORDED 10/22/80
CONV. P.D. 25
PLAT-2252

BUILDING NO. 2 GROUP 2250-W

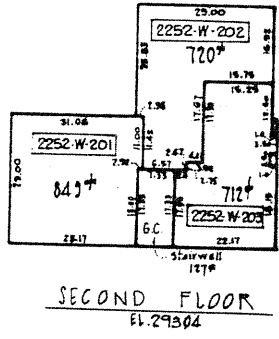
79-032



SURVEYOR'S CERTIFICATE

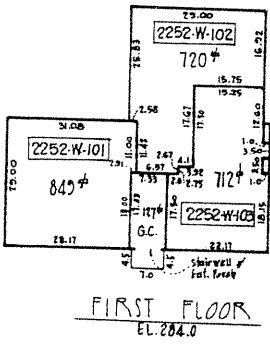
I hereby certify that the plan of condominium shown herein is correct that it is a subdivision of the floors of Building No. 2 Group 2252-W, Rock Creek Garden Condominium as shown on sheet 1 of 19 filed as part of this plan of condominium.

Oct 17 1980
 Date
 James M. Fowler, Jr.
 Professional Land Surveyor
 Maryland Reg. No. 4214



NOTES

1. This unit group is a 2 story structure with a loft area level and includes G condominium units.
2. Each condominium unit as shown hereon is designated by a combination of letters and numbers. A typical example is shown thus: 1000-W-101
3. General common areas include stairwells, bearing walls, porch entrances, and all land underlying the condominium units shown and designated hereon as G.C.
4. Limited common areas include balconies, terraces, decks, foyers, and electrical, storage and mechanical rooms and designated hereon as L.C.
5. The dimensions of each condominium unit, the limited common areas and the common areas are measured from inside faces of bearing walls, dimensions having been taken from the architectural plans for said building. The areas of each unit are computed accordingly in square footage and designated hereon as sq ft.
6. The elevations shown hereon are based on actual field surveys in W.S.S.C. Datum.
7. Bold lines shown hereon indicate bearing walls or structural elements. All interior bearing walls are not shown.



BUILDING No 2 GROUP 2252-W

Sheet G of 19
CONDOMINIUM PLAN
BUILDING NO. 2 GROUP 2252-W
PHASE-II
ROCK CREEK
GARDENS
CONDOMINIUM
 ELECTION DISTRICT NO. 13
 MONTGOMERY COUNTY, MARYLAND
 SCALE: 1" = 20' AUGUST, 1980

Prepared by
 Office of
 James M. Fowler
 27 W. Jefferson St., Rock., MD.
 708-2377

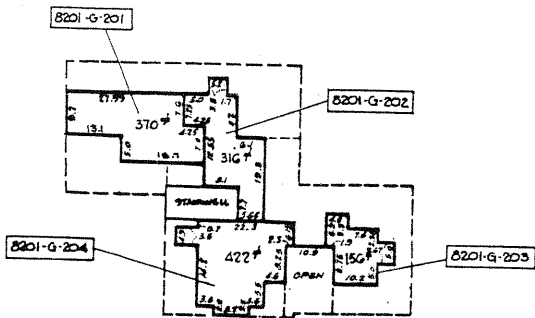
RECORDED 10/2
 CONDA. P. 5-25
 PLAT - 2291

SURVEYOR'S CERTIFICATE

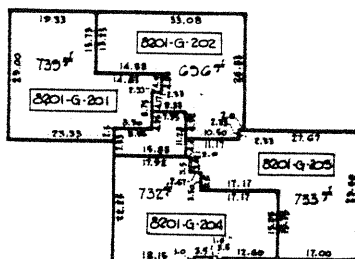
I hereby certify that the plan of condominium shown herein is correct that it is a subdivision of the floors of Building No. 8201-G Group 8201-G, Rock Creek Garden Condominium as shown on sheet 1 of 19 filed as part of this plan of condominium.

OCT 17 1980
Date

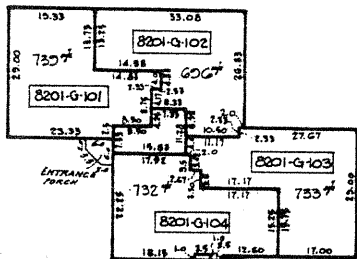
James M. Fowler, Jr.
James M. Fowler, Jr.
Professional Land Surveyor
Maryland Reg. No. 4214



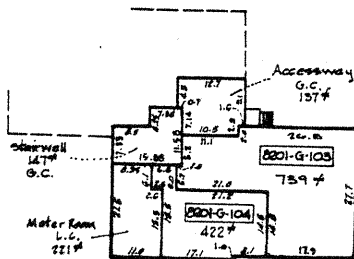
Loft Area Level
EL. 280.08



Second Floor
EL. 271.04



First Floor
EL. 262.0



Basement Area Level
EL. 253.0

NOTES:

1. This unit group is a 2 story structure with a basement and a loft area level and includes 8 condominium units
2. Each condominium unit as shown hereon is designated by a combination of letters and numbers. A typical example is shown thus: [1000-W:101]
3. General common areas include stairwells, bearing walls, porch entrances, and all land underlying the condominium units shown and designated hereon as G.C.
4. Limited common areas include balconies, terraces, decks, foyers, and electrical, storage and mechanical rooms and designated hereon as L.C.
5. The dimensions of each condominium unit, the limited common areas and the common areas are measured from inside faces of bearing walls, dimensions having been taken from the architectural plans for said building. The areas of each unit are computed accordingly in square footage and designated hereon as sq ft.
6. The elevations shown hereon are based on actual field surveys in W.S.S.C. Datum.
7. Bold lines shown hereon indicate bearing walls or structural elements. All interior bearing walls are not shown.

Sheet 2 of 19

CONDOMINIUM FLAT
BUILDING NO. 1 GROUP 8201-G
PHASE-II

ROCK CREEK GARDENS CONDOMINIUM

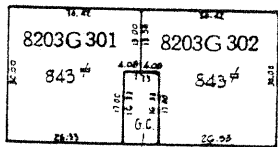
ELECTION DISTRICT NO. 13
MONTGOMERY COUNTY, MARYLAND
SCALE: 1" = 20' AUGUST, 1980

Prepared by
Office of
James M. Fowler
27 W. Jefferson St., Rock., MD.
762-2377

RECORDED 10/25/80
COM. P. B. 25
PLAT - 2287

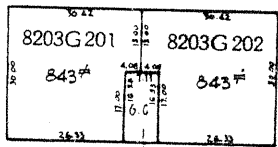
79-032

Building No. 1
Group 8201G



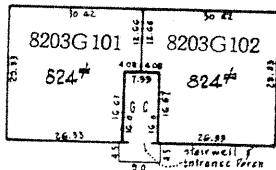
Third Floor

EL. 285.08



Second Floor

EL. 276.04



First Floor

EL. 267.0

SURVEYOR'S CERTIFICATE

I hereby certify that the plan of condominium shown herein is correct that it is a subdivision of the floors of Building No. 1 Group 8203G, Rock Creek Garden Condominium as shown on sheet 1 of 15 filed as part of this plan of condominium.

OCT 17 1980
Date

James M. Fowler, Jr.
James M. Fowler, Jr.
Professional Land Surveyor
Maryland Reg. No. 4214

NOTES

1. This unit group is a 3 story structure and includes 2 condominium units per floor creating a total of six (6) condominium units.
2. Each condominium unit as shown herein is designated by a combination of letters and numbers. A typical example is shown thus: 1000 W.101
3. General common areas include stairwells, bearing walls, porch entrances, and all land underlying the condominium units shown and designated herein as G.C.
4. Limited common areas include balconies, terraces, decks, foyers, and electrical, storage and mechanical rooms and designated herein as L.C.
5. The dimensions of each condominium unit, the limited common areas, and the common areas are measured from inside faces of bearing walls, dimensions having been taken from the architectural plans for said building. The areas of each unit are computed accordingly in square footage and designated herein as ~~sq~~.
6. The elevations shown herein are based on actual field surveys in W.S.S.C. Datum.
7. Bold lines shown herein indicate bearing walls or structural elements. All interior bearing walls are not shown.

Sheet 3 of 15

**CONDOMINIUM PLAT
BUILDING NO. 1 GROUP 8203G
PHASE-II**

**ROCK CREEK
GARDENS
CONDOMINIUM**

ELECTION DISTRICT NO. 13
MONTGOMERY COUNTY, MARYLAND
SCALE: 1" = 20' August 1980

Prepared by
Office of
James M. Fowler
27 W. Jefferson St., Rock., MD.
762-2377

RECORDED 10/22/80
CONDO P.B. 23
PLAT 2208

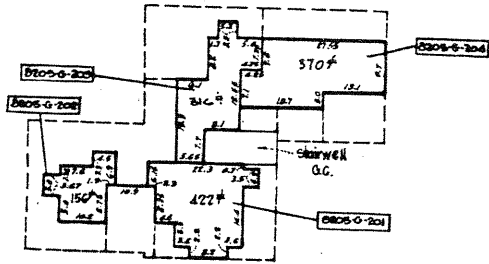
Building No. 1
Group 8203G

SURVEYOR'S CERTIFICATE

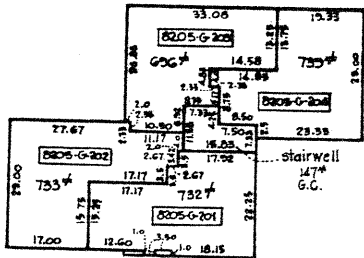
I hereby certify that the plan of condominium shown herein is correct that it is a subdivision of the floors of Building No. 1 Group 8205-G, Rock Creek Garden Condominium as shown on sheet 1 of 15 filed as part of this plan of condominium.

OCT 17 1980
Date

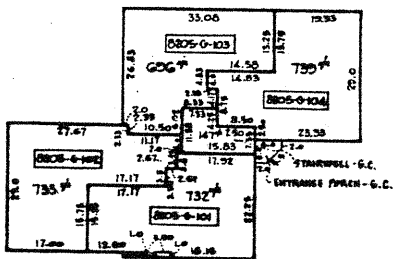
James M. Fowler, Jr.
James M. Fowler, Jr.
Professional Land Surveyor
Maryland Reg. No. 4214



Loft Area Level
EL. 288.08



Second Floor
EL. 275.04



First Floor
EL. 270.0

Building No. 1
Group 8205-G

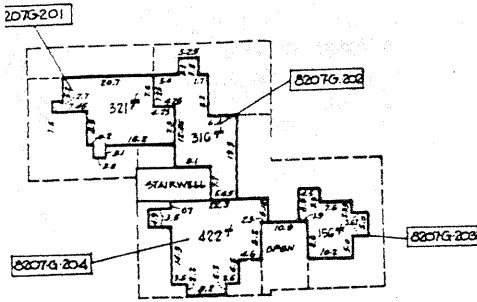
NOTES

1. This unit group is a 2 story structure with a loft area level and includes 6 condominium units.
2. Each condominium unit as shown hereon is designated by a combination of letters and numbers. A typical example is shown thus: [8205-G-101]
3. General common areas include stairwells, bearing walls, porch entrances, and all land underlying the condominium units shown and designated hereon as G.C.
4. Limited common areas include balconies, terraces, decks, foyers, and electrical, storage and mechanical rooms and designated hereon as L.C.
5. The dimensions of each condominium unit, the limited common areas and the common areas are measured from inside faces of bearing walls, dimensions having been taken from the architectural plans for said building. The areas of each unit are computed accordingly in square footage and designated hereon as ft^2 .
6. The elevations shown hereon are based on actual field surveys in W.S.C. Datum.
7. Bold lines shown hereon indicate bearing walls or structural elements. All interior bearing walls are not shown.

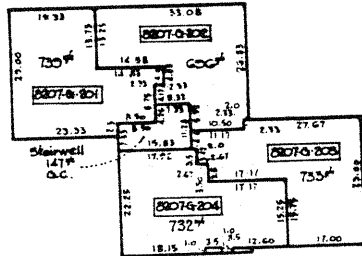
Sheet 4 of 15
CONDOMINIUM PLAT
BUILDING NO. 1 GROUP 8205-G
PHASE-II
ROCK CREEK
GARDENS
CONDOMINIUM
ELECTION DISTRICT NO. 13
MONTGOMERY COUNTY, MARYLAND
SCALE: 1" = 20' August 1980

Prepared by
Office of
James M. Fowler
27 W. Jefferson St., Rock., MD.
762-2377

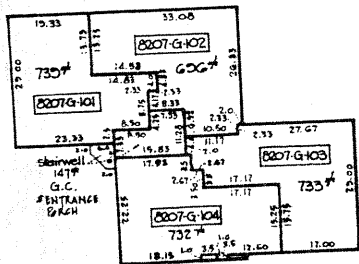
RECORDED 10/21/80
CONDR. PB. 25
PLAT - 2280



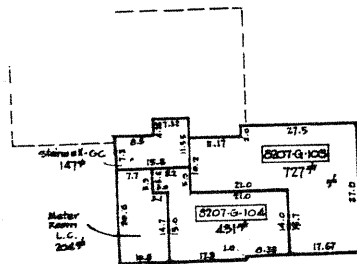
Loft Area Level
EL. 299.08



Second Floor
EL. 284.04



First Floor
EL. 275.0



Basement Area Level
EL. 266.0

Building No. 1
Group 8207G

SURVEYOR'S CERTIFICATE

I hereby certify that the plan of condominium shown herein is correct that it is a subdivision of the floors of Building No. 1 Group 8207G, Rock Creek Garden Condominium as shown on sheet 1 of 19 filed as part of this plan of condominium.

08T 17 1980
Date

James M. Fowler, Jr.
James M. Fowler, Jr.
Professional Land Surveyor
Maryland Reg. No. 4214

NOTES:

1. This unit group is a 2 story structure with a basement and a loft area level and includes 0 condominium units.
2. Each condominium unit as shown hereon is designated by a combination of letters and numbers. A typical example is shown (thus: 1000-W-101).
3. General common areas include stairwells, bearing walls, porch entrances, and all land underlying the condominium units shown and designated hereon as G.C.
4. Limited common areas include balconies, terraces, decks, loyers, and electrical, storage and mechanical rooms and designated hereon as L.C.
5. The dimensions of each condominium unit, the limited common areas and the common areas are measured from inside faces of bearing walls, dimensions having been taken from the architectural plans for said building. The areas of each unit are computed accordingly in square footage and designated hereon as \pm .
6. The elevations shown hereon are based on actual field surveys in W.S.S.C. Datum.
7. Bold lines shown hereon indicate bearing walls or structural elements. All interior bearing walls are not shown.

Sheet 5 of 19

CONDOMINIUM FLAT
BUILDING NO. 1 GROUP 8207G
PHASE-II

**ROCK CREEK
GARDENS
CONDOMINIUM**

ELECTION DISTRICT NO. 13
MONTGOMERY COUNTY, MARYLAND
SCALE: 1" = 20' AUGUST, 1980

Prepared by
Office of
James M. Fowler
27 W Jefferson St., Rock., MD.
762 2377

RECORDED 10/22/80
CONDO. P.B. 23
PLAT-2200

79-032